

UniversitätsKlinikum Heidelberg

Allogene Stammzelltransplantation: Jahresbericht 2010

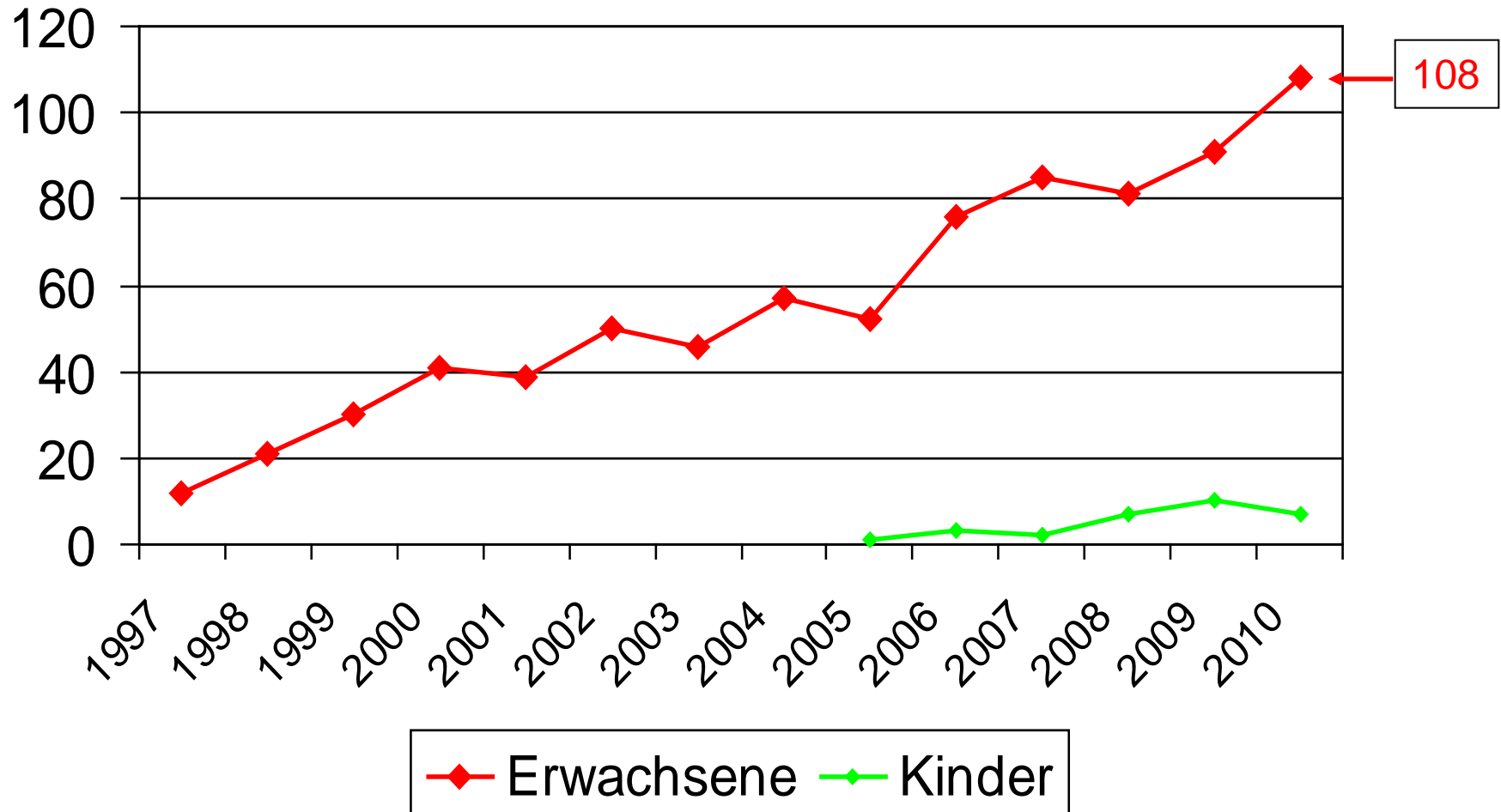
Sektion Stammzelltransplantation

Abteilung Innere Medizin V

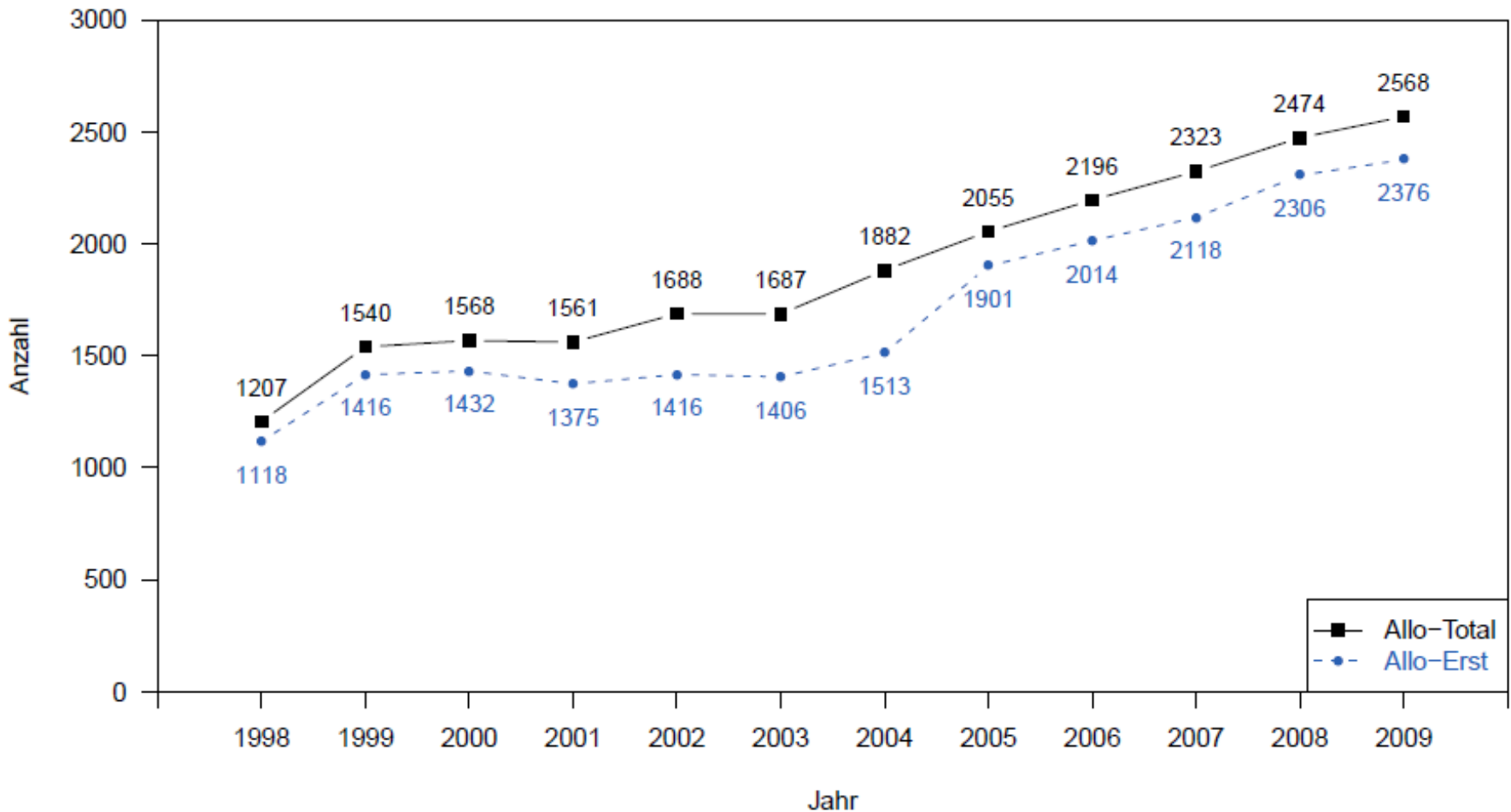
Universitätsklinikum Heidelberg



HD: allogene Transplantationszahlen



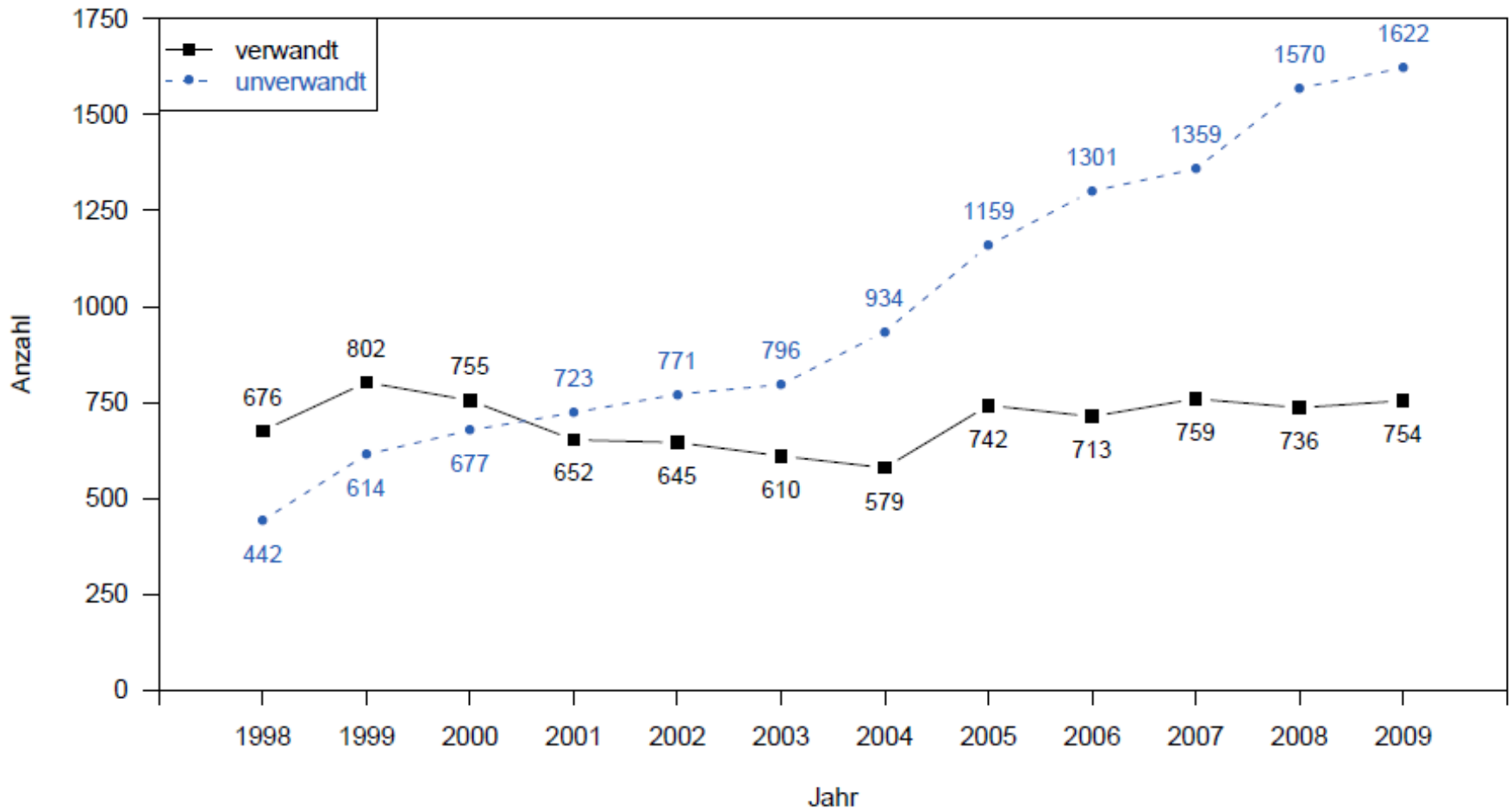
H SCT in Deutschland



2009: HD mit 91 alloH SCT an 7. Stelle in Deutschland

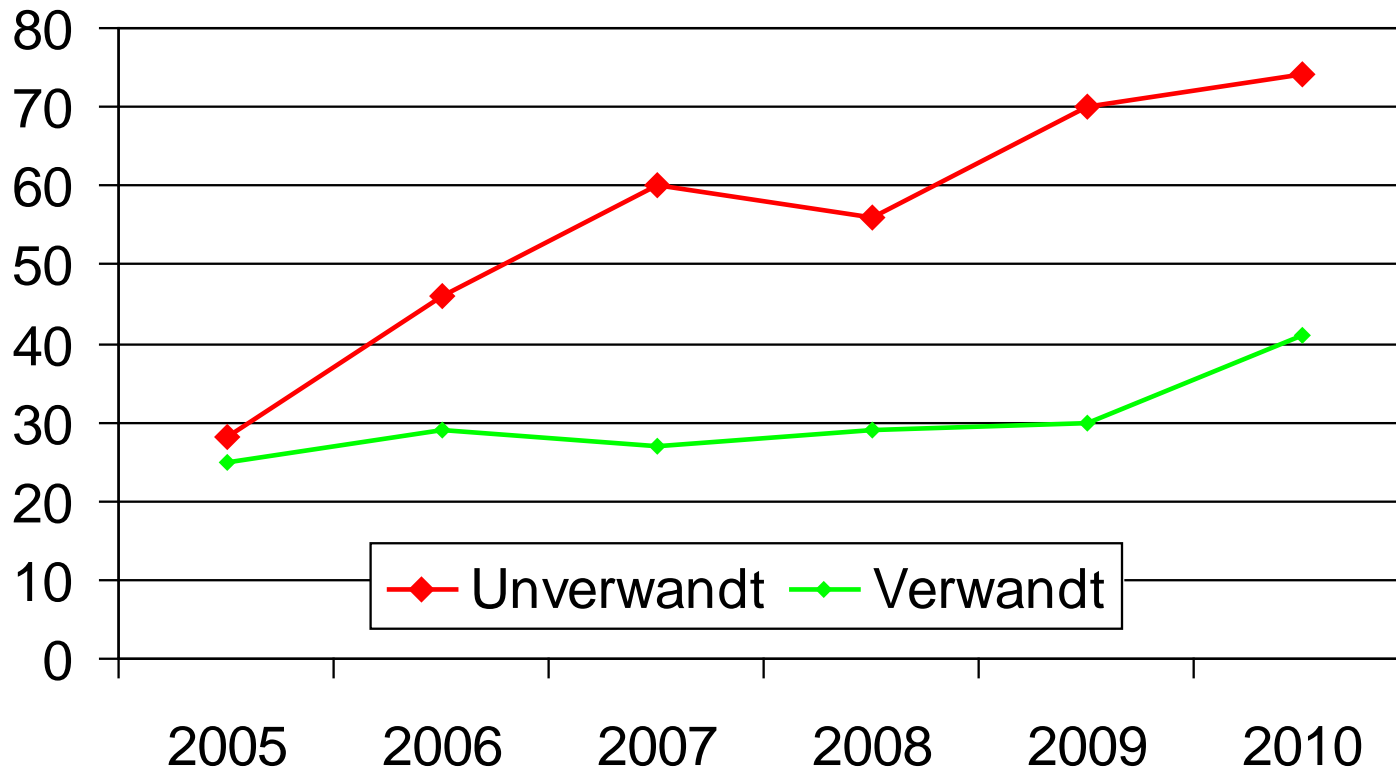


Spender: verwandt vs. unverwandt



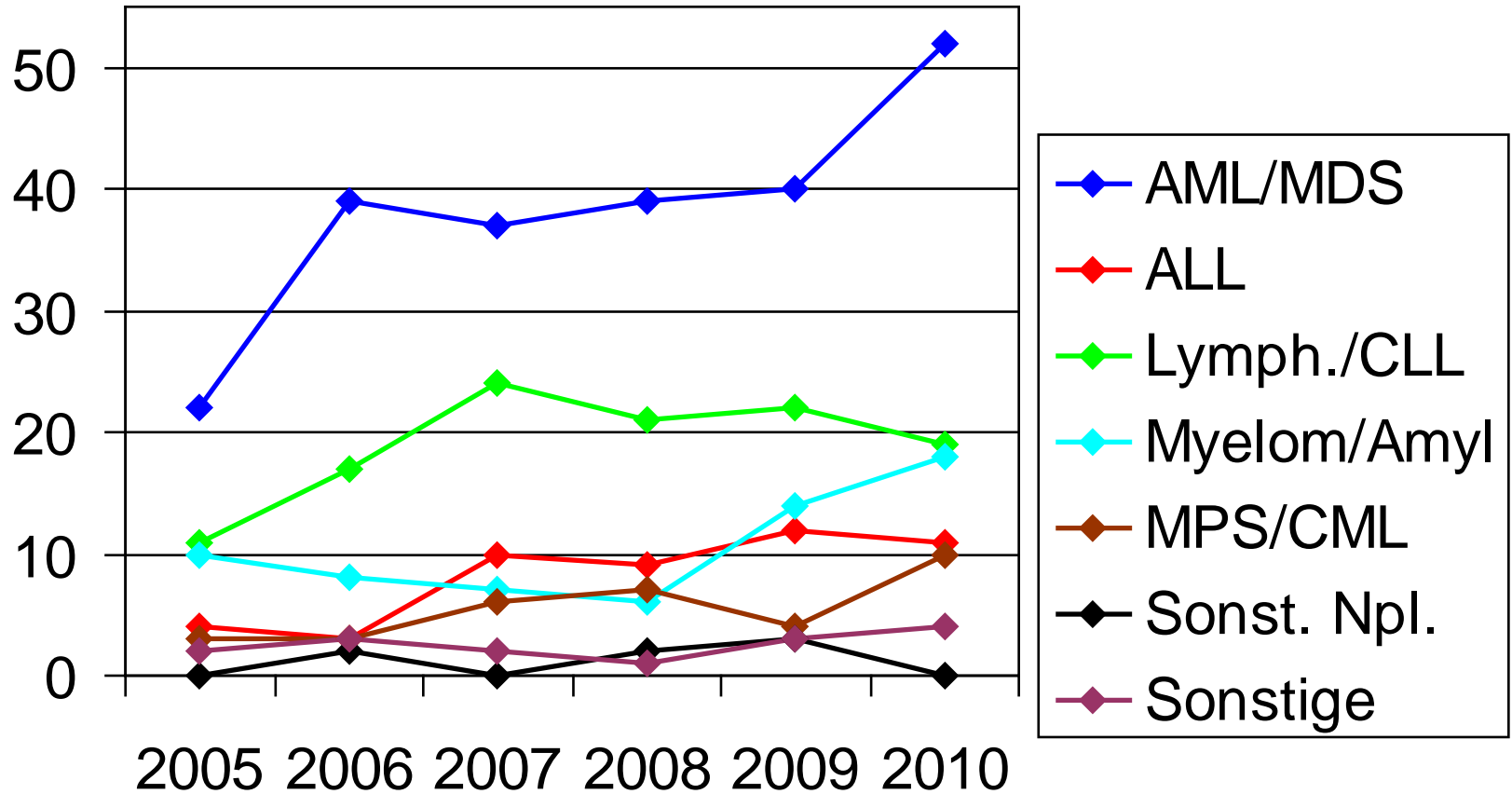


HD: Spender 2005-2010



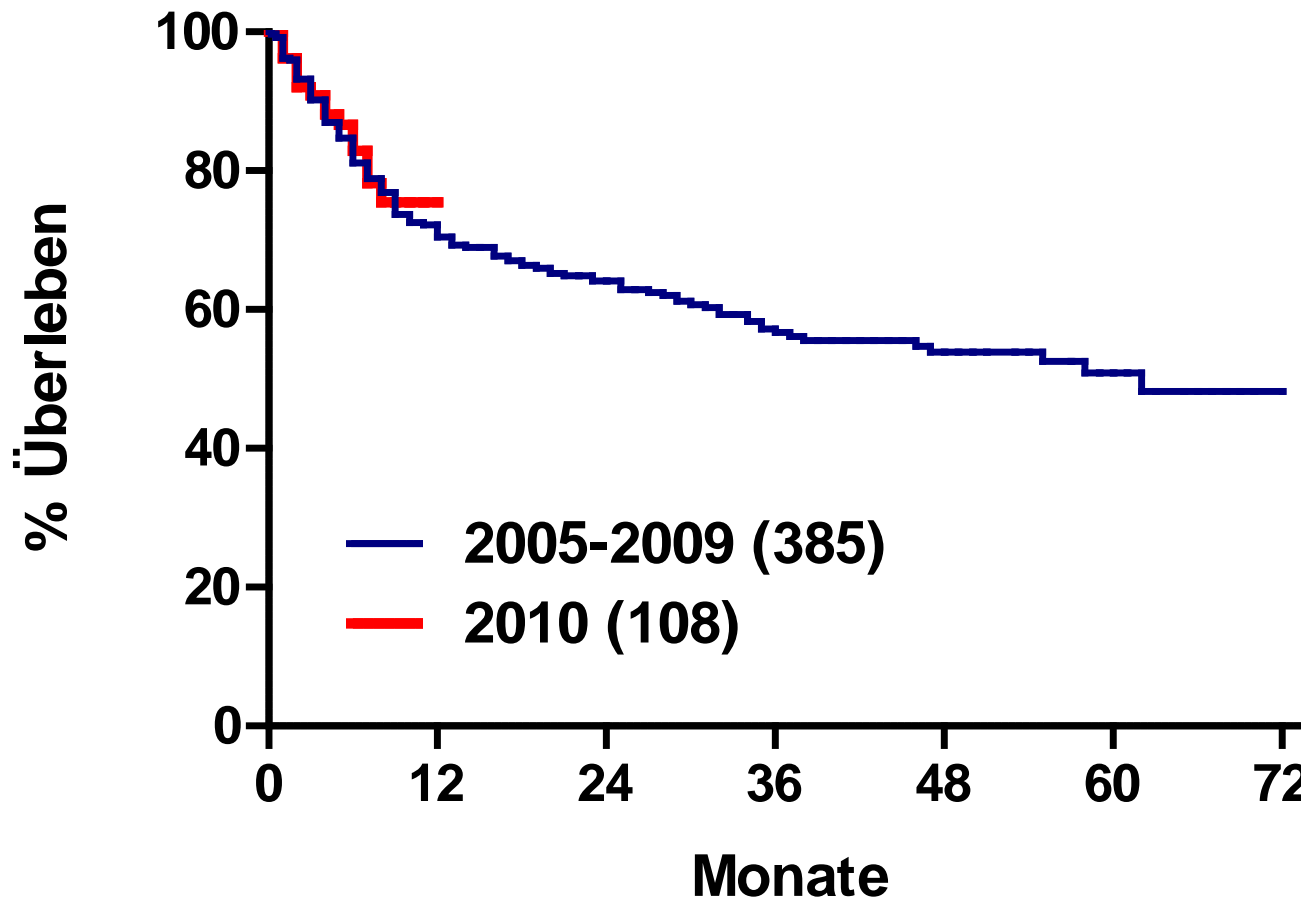


HD: Indikationen 2005-2010



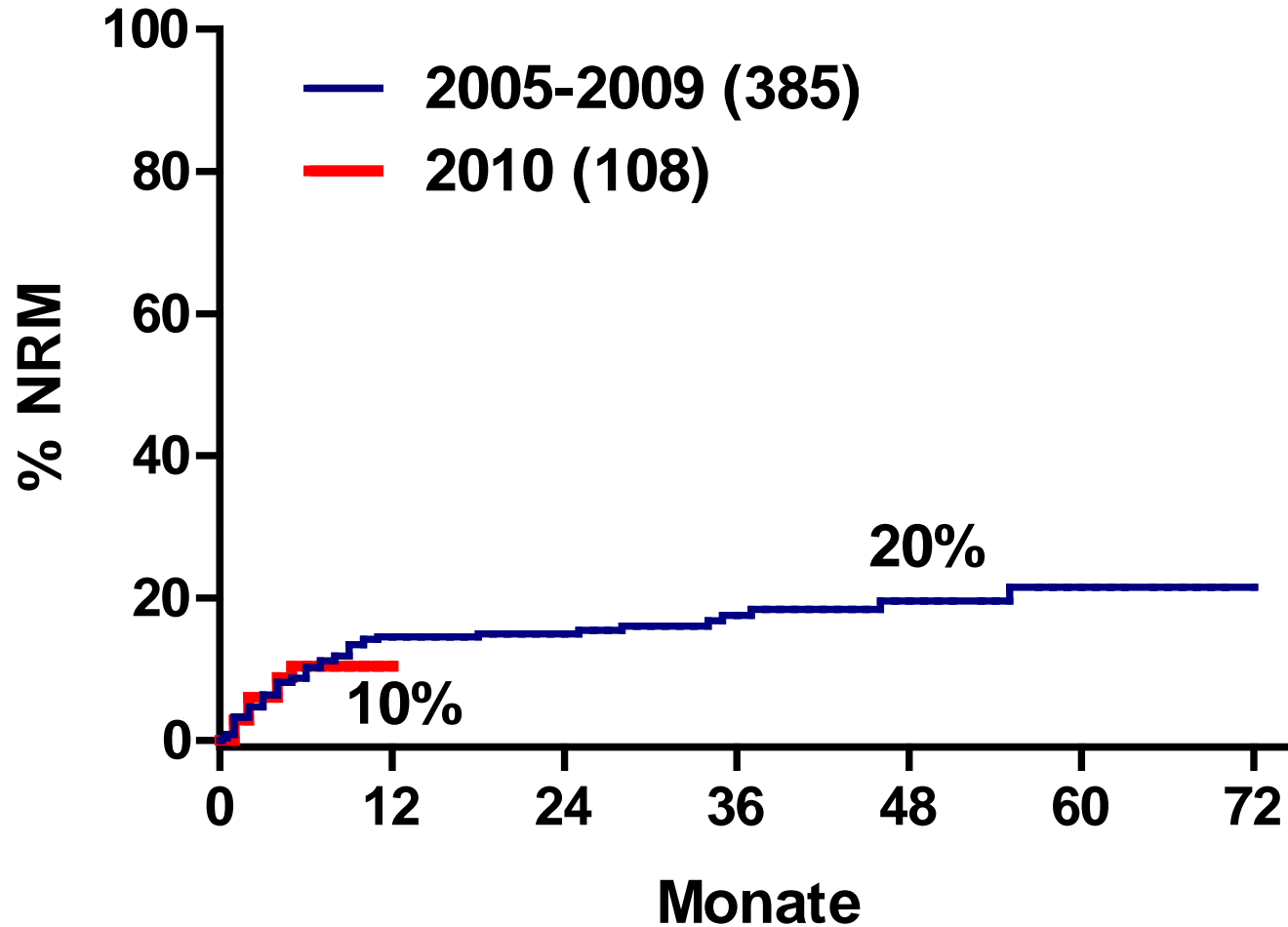


HD: Gesamtüberleben (ohne Kinder)





Non-Relapse Mortality (ohne Kinder)

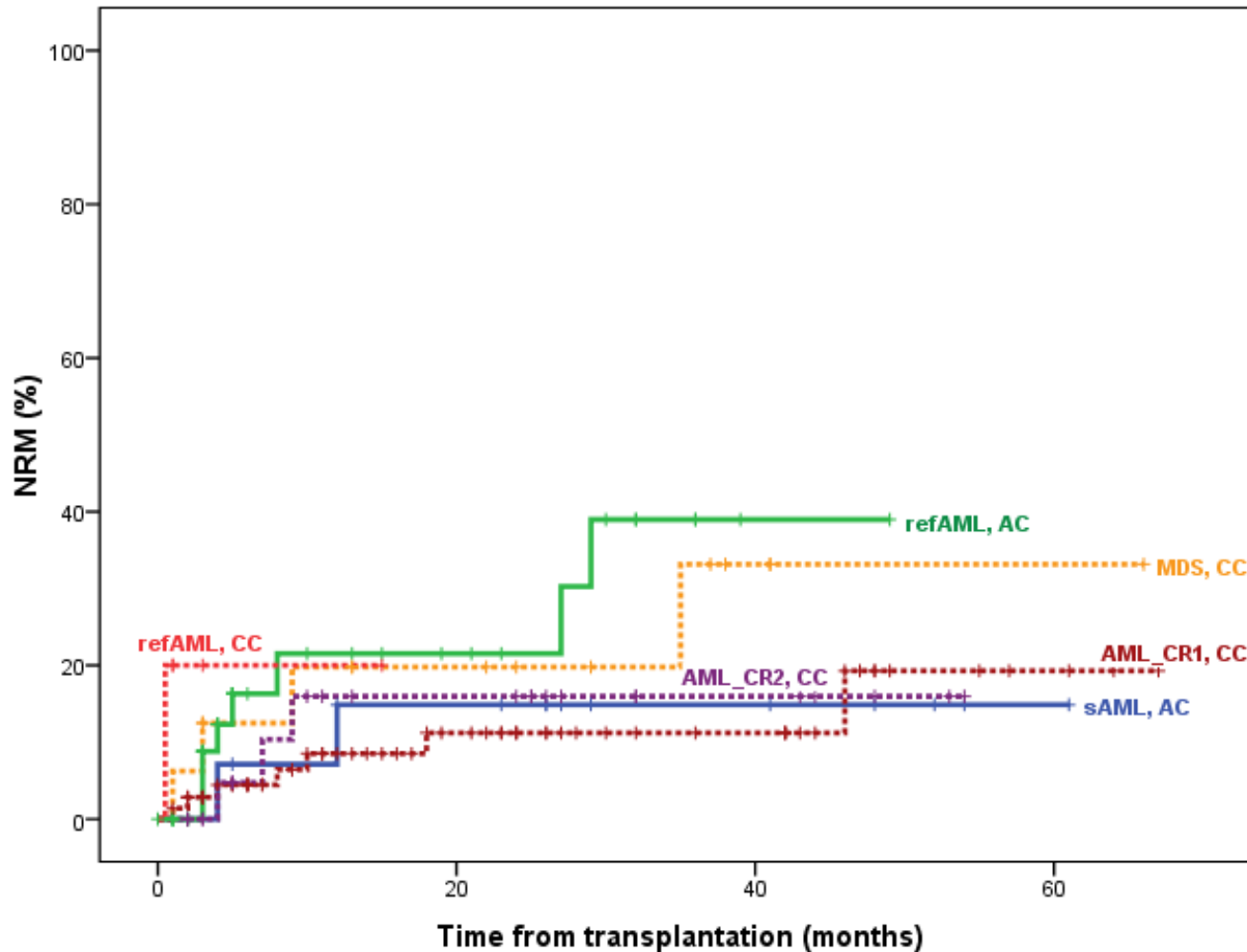




Toxicity and resource consumption associated with chemotherapy immediately followed by reduced-intensity conditioning for allogeneic SCT (aplasia conditioning) in 176 patients with AML and MDS
Susanne Jung, Ute Hegenbart, Thomas Luft, Sascha Dietrich, Frauke Bellos, Anthony D Ho, Peter Dreger

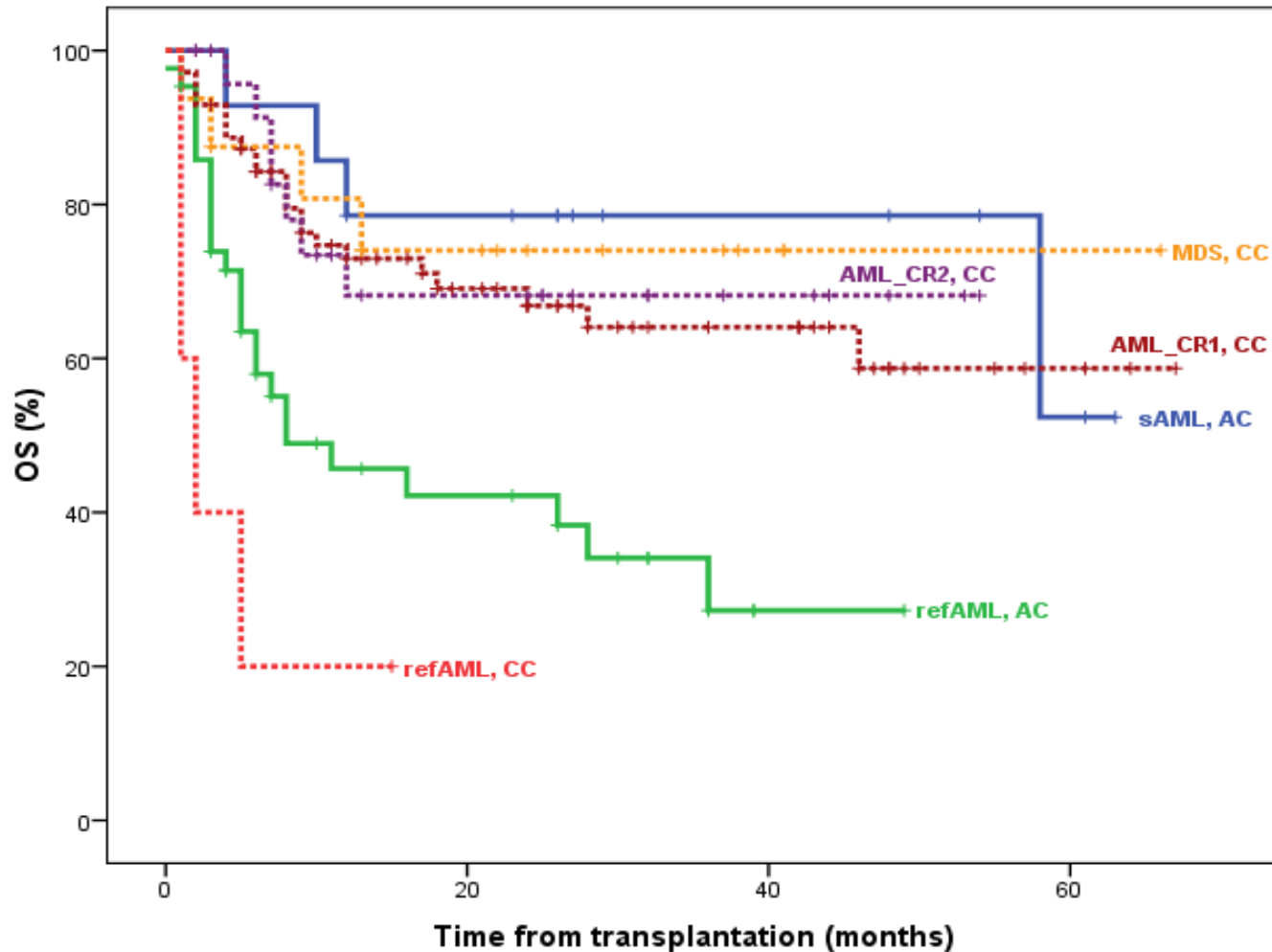
	AC	CC	p
Days hospitalized	53 (\pm 16,6)	32 (\pm 11,9)	<0,01
Number of erythrocyte transfusions after Tx	10 (\pm 8,3)	5 (\pm 4,6)	<0,01
Number of platelet transfusions after Tx	8 (\pm 7,7)	4 (\pm 4,4)	<0,01
Days to platelet reconstitution (>20/nl) after Tx	16 (\pm 8,7)	12 (\pm 9,3)	<0,01
Days to leukocyte reconstitution (>1/nl) after Tx	15 (\pm5,1)	16 (\pm6,5)	n.s.
Days of neutropenic fever after Tx	7 (\pm 5,9)	4 (\pm 4,6)	<0,01
Days on which antibiotics were given after Tx	18 (\pm 10,0)	10 (\pm 8,9)	<0,01
Days on which antimycotics given after Tx	8 (\pm 11,1)	3 (\pm 6,0)	<0,01
Proportion of patients with \geq 3-4 non-hematological tox after Tx	53%	30%	<0,01

AML/MDS: Klassische Konditionierung vs Aplasie-Tpl. (NRM, n = 176)



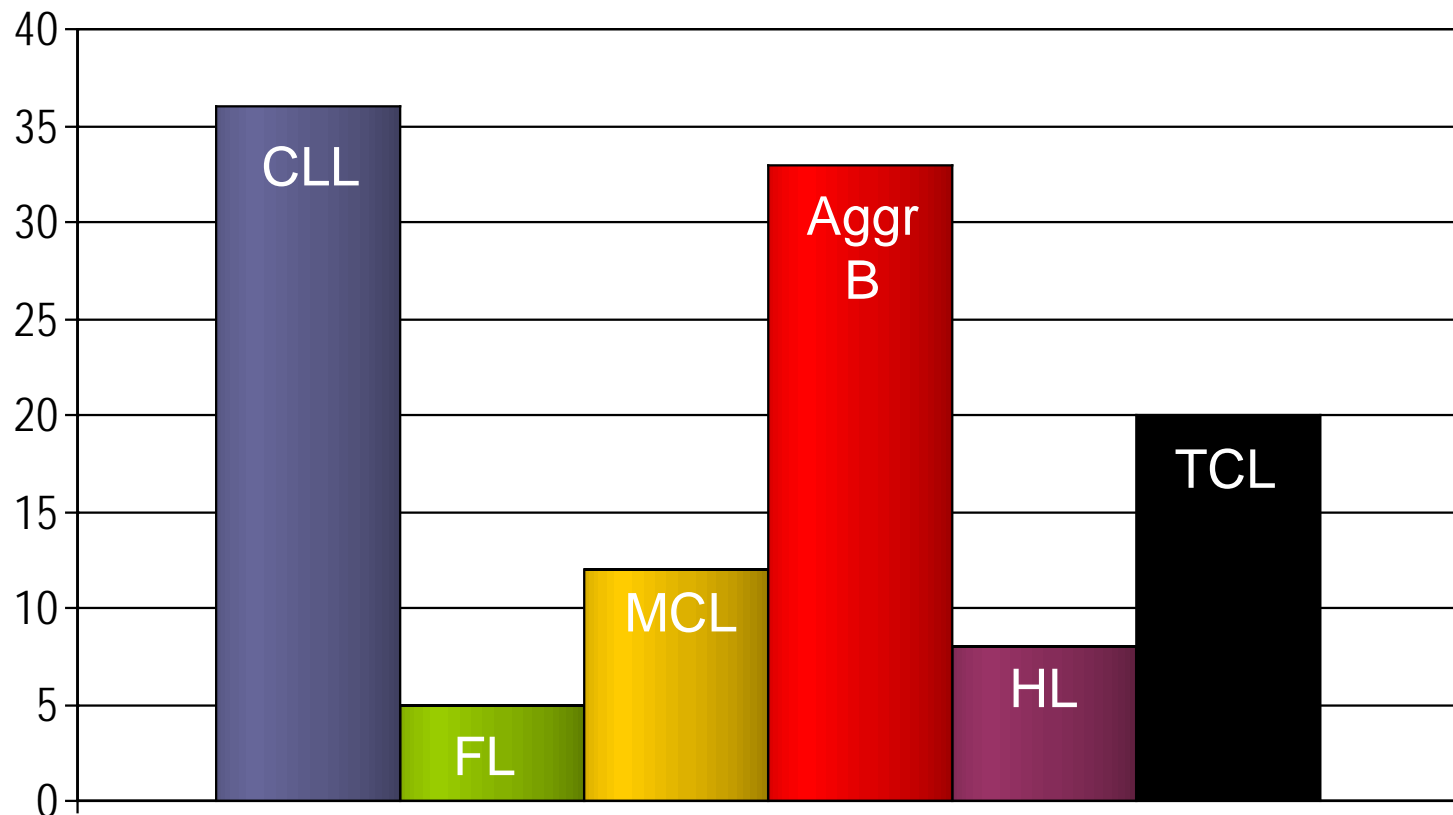


AML/MDS: Klassische Konditionierung vs Aplasia-Tpl. (OS, n = 176)



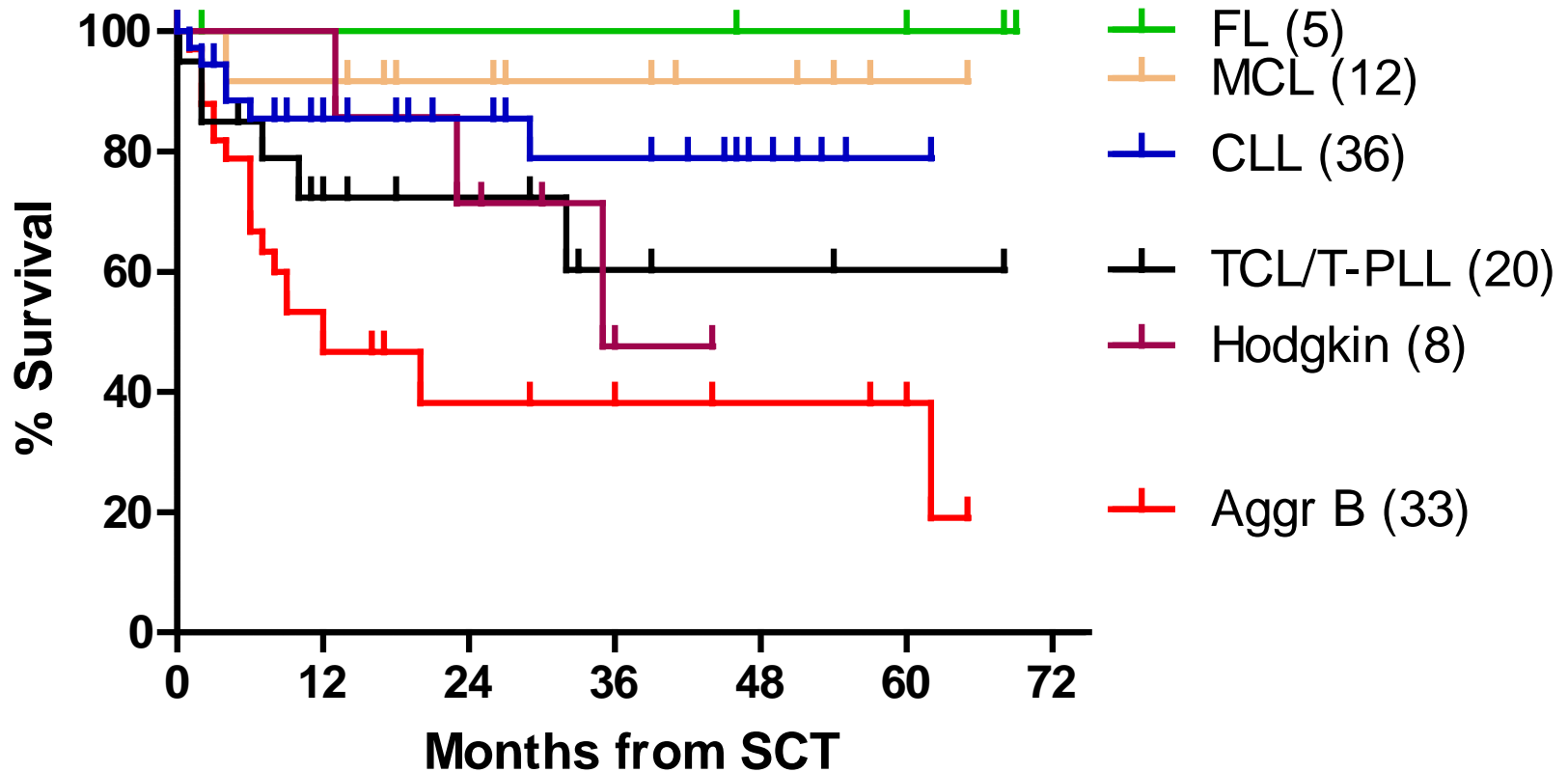


Heidelberg: alloSCT for lymphoma 2005-2010 (n = 115)



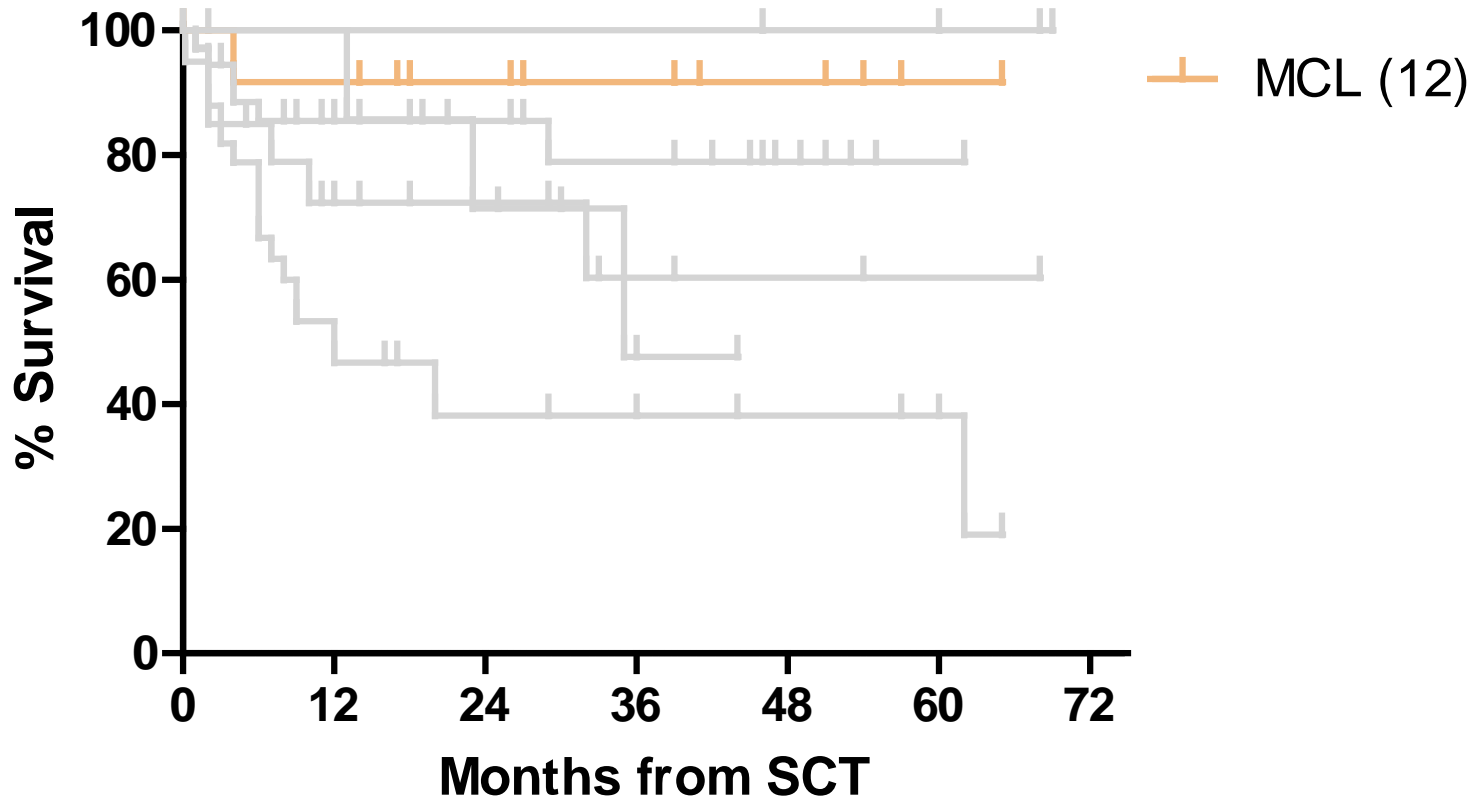


Heidelberg: OS after alloSCT for lymphoma (2005-2010; n = 115)





Heidelberg: OS after alloSCT for lymphoma (2005-2010; n = 115)



Patterns and Outcome of Relapse After Autologous Stem Cell Transplantation for Mantle Cell Lymphoma

Sascha Dietrich, MD¹; Blanca Tielesch, MD¹; Michael Rieger, MD¹; Maike Nickelsen, MD²; Christiane Pott, MD³; Mathias Witzens-Harig, MD¹; Michael Kneba, MD³; Norbert Schmitz, MD²; Antony D.Ho, MD¹; and Peter Dreger, MD¹

Risk factors for survival after MCL REL after autoSCT (multivariate, 52 REL after 119 autotransplants)

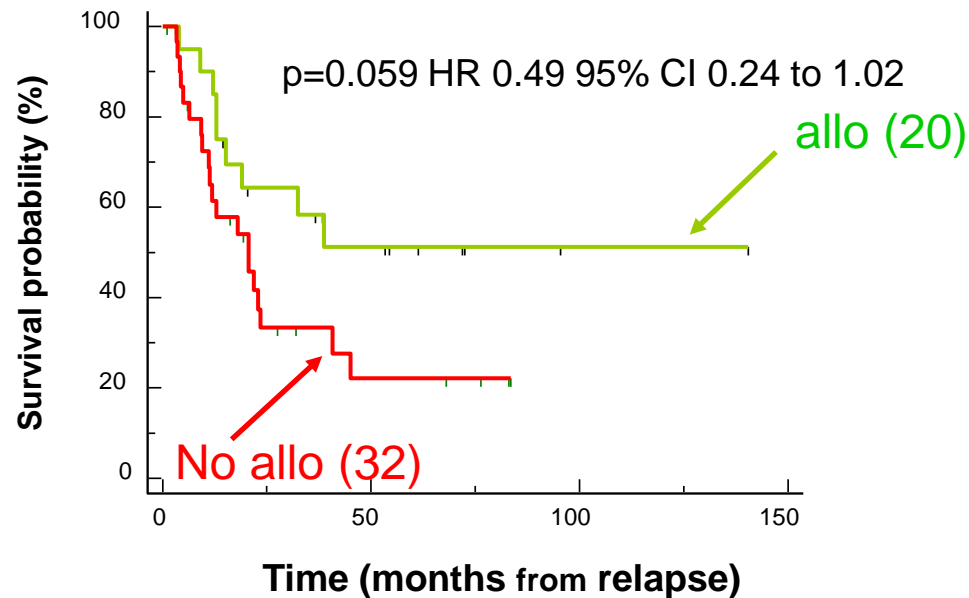
	p	HR	Lower CI	Lower CI
Time from autoSCT to relapse >12mo	<0.001	0.45	0.29	0.68
Salvage treatment alloSCT	<0.01	0.32	0.14	0.74
Age, calendar year, rituximab, CR1 vs later	n.s.			



MCL: AlloSCT for autoSCT failure

HD/KI/HH 1994-2008 (52 REL after 119 autotransplants)

Overall survival





Publikationen (Erst- oder Letztautorschaft):

BÖTTCHER S, RITGEN M, DREGER P. Allogeneic stem cell transplantation for chronic lymphocytic Leukemia: lessons to be learned from minimal residual disease studies. *Blood Rev* 2011;in press.

CONZELMANN M; WAGNER,A.H.; HILDEBRANDT,A.; RODIONOVA,E.; **HESS,M.;** ZOTA,A.; GIESE,T.; FALK,C.S.; **HO AD.; DREGER P;** HECKER M.; **LUFT T.** IFN-gamma activated JAK1 shifts CD40-induced cytokine profiles in human antigen-presenting cells toward high IL-12p70 and low IL-10 production. (2010). *Biochem.Pharmacol.* 80:2074-86.

DREGER P, DÖHNER H, RITGEN M, BÖTTCHER S, BUSCH R, **DIETRICH S,** BUNJES D, COHEN S, SCHUBERT J, **HEGENBART U,** BEELEN D, ZEIS M, STADLER M, HASENKAMP J, UHAREK L, SCHEID C, HUMPE A, **ZENZ T,** WINKLER D, HALLEK M, KNEBA M, SCHMITZ N, STILGENBAUER S. (2010). Allogeneic stem cell transplantation provides durable disease control in poor-risk chronic lymphocytic leukemia: long-term clinical and MRD results of the GCLLSG CLL3X trial. *Blood* 116:2438-47.

DIETRICH S, HEGENBART U, ANDRULIS M, **SCHMITT T, BELLOS F,** MARTENS UM, **MEISSNER J, KRÄMER A, HO AD, DREGER P.** Blastic plasmacytoid dendritic cell neoplasia (BPDC) in elderly patients: Results of a treatment algorithm employing allogeneic stem cell transplantation with moderately reduced conditioning intensity. *Biol Blood Marrow Transplant* 2011 epub Jan 5.

DIETRICH S; TIELESCH B.; RIEGER M; NICKELSEN M; POTT C; **WITZENS-HARIG M;** KNEBA M; SCHMITZ,N.; **HO AD.; DREGER P.** Patterns and outcome of relapse after autologous stem cell transplantation for mantle cell lymphoma. *Cancer,* epub Nov 29, 2010

SCHMITT T; LUFT T; HEGENBART U; TRAN TH; **HO AD; DREGER P.** Pentostatin for Treatment of Steroid-Refractory Acute Graft-Versus-Host Disease: A Retrospective Single Center Analysis. *Bone Marrow Transplant* 2010;epub June 21:

WITZENS-HARIG M, DREGER P. Autologous transplantation of follicular lymphoma in the era of rituximab. *Leuk.Lymphoma* 2010;51:967-974.



Publikationen (Erst- oder Letztautorschaft):

BÖTTCHER S, RITGEN M, DREGER P. Allogeneic stem cell transplantation for chronic lymphocytic Leukemia: lessons to be learned from minimal residual disease studies. *Blood Rev* 2011;in press.

CONZELMANN M; WAGNER,A.H.; HILDEBRANDT,A.; RODIONOVA,E.; **HESS,M.**; ZOTA,A.; GIESE,T.; FALK,C.S.; **HO AD.; DREGER P;** HECKER M.; **LUFT T.** IFN-gamma activated JAK1 shifts CD40-induced cytokine profiles in human antigen-presenting cells toward high IL-12p70 and low IL-10 production. (2010). *Biochem.Pharmacol.* 80:2074-86.

DREGER P, DÖHNER H, RITGEN M, BÖTTCHER S, BUSCH R, **DIETRICH S,** BUNJES D, COHEN S, SCHUBERT J, **HEGENBART U,** BEELEN D, ZEIS M, STADLER M, HASENKAMP J, UHAREK L, SCHEID C, HUMPE A, **ZENZ T,** WINKLER D, HALLEK M, KNEBA M, SCHMITZ N, STILGENBAUER S. (2010). Allogeneic stem cell transplantation provides durable disease control in poor-risk chronic lymphocytic leukemia: long-term clinical and MRD results of the GCLLSG CLL3X trial. *Blood* 116:2438-47.

DIETRICH S, HEGENBART U, ANDRULIS M, **SCHMITT T, BELLOS F,** MARTENS UM, **MEISSNER J, KRÄMER A, HO AD, DREGER P.** Blastic plasmacytoid dendritic cell neoplasia (BPDC) in elderly patients: Results of a treatment algorithm employing allogeneic stem cell transplantation with moderately reduced conditioning intensity. *Biol Blood Marrow Transplant* 2011 epub Jan 5.

DIETRICH S; TIELESCH B.; RIEGER M; NICKELSEN M; POTT C; **WITZENS-HARIG M;** KNEBA M; SCHMITZ,N.; **HO AD.; DREGER P.** Patterns and outcome of relapse after autologous stem cell transplantation for mantle cell lymphoma. *Cancer,* epub Nov 29, 2010

SCHMITT T; LUFT T; HEGENBART U; TRAN TH; **HO AD; DREGER P.** Pentostatin for Treatment of Steroid-Refractory Acute Graft-Versus-Host Disease: A Retrospective Single Center Analysis. *Bone Marrow Transplant* 2010;epub June 21:

WITZENS-HARIG M, DREGER P. Autologous transplantation of follicular lymphoma in the era of rituximab. *Leuk.Lymphoma* 2010;51:967-974.



Nicht- interventionelle EBMT-Studie zur SCT bei BPDC

Tuesday, 5 April 2011

Amphitheatre

16:00 - 17:30

Working Party Session Lymphoma

Chairs: P. Dreger (Heidelberg, DE); S.P. Robinson (Bristol, UK)

- | | |
|-------|--|
| 1 | LWP activity report |
| 16:00 | P. Dreger (Heidelberg, DE) |
| 2 | CALM study (Outcomes of patients with lymphoma and multiple myeloma autografted with progenitors obtained with plerixaflor-containing mobilization regimens vs. other mobilisation protocols): A joint retrospective Study of EBMT Chronic Leukemia and Lymphoma WP |
| 16:10 | A. Sureda (Cambridge, UK) |
| 3 | STREAM study (Stem cell mobilization strategies for lymphomas): A non-interventional prospective study of the EBMT Lymphoma WP (Aggressive B cell Lymphoma subcommittee) |
| 16:20 | H. Schouten (Maastricht, NL) |
| 4 | Allogeneic stem cell transplantation for cutaneous T cell lymphoma: A non-interventional prospective study of the EBMT Lymphoma WP and the EORTC (T cell lymphoma subcommittee) |
| 16:30 | R. Duarte (Barcelona, ES) |
| 5 | Predictive role of whole body positron emission tomography (PET) before allogeneic stem cell transplantation: A non-interventional prospective study of the EBMT Lymphoma WP (Hodgkin lymphoma subcommittee) |
| 16:40 | M. Trnety (Prague, CZ) |
| 6 | Stem cell transplantation for blastic plasmacytoid dendritic cell neoplasia (BPDC): A joint non-interventional prospective study of the EBMT Lymphoma and Acute Leukemia WP |
| 16:50 | S. Dietrich (Heidelberg, DE) |





Publikationen (Erst- oder Letztautorschaft):

BÖTTCHER S, RITGEN M, DREGER P. Allogeneic stem cell transplantation for chronic lymphocytic leukemia: Lessons to be learned from minimal residual disease studies. *Blood Rev* 2011;in press.

CONZELMANN M; WAGNER,A.H.; HILDEBRANDT,A.; RODIONOVA,E.; **HESS,M.**; ZOTA,A.; GIESE,T.; FALK,C.S.; **HO AD.; DREGER P;** HECKER M.; **LUFT T.** IFN-gamma activated JAK1 shifts CD40-induced cytokine profiles in human antigen-presenting cells toward high IL-12p70 and low IL-10 production. (2010). *Biochem.Pharmacol.* 80:2074-86.

DREGER P, DÖHNER H, RITGEN M, BÖTTCHER S, BUSCH R, **DIETRICH S,** BUNJES D, COHEN S, SCHUBERT J, **HEGENBART U,** BEELEN D, ZEIS M, STADLER M, HASENKAMP J, UHAREK L, SCHEID C, HUMPE A, **ZENZ T,** WINKLER D, HALLEK M, KNEBA M, SCHMITZ N, STILGENBAUER S. (2010). Allogeneic stem cell transplantation provides durable disease control in poor-risk chronic lymphocytic leukemia: long-term clinical and MRD results of the GCLLSG CLL3X trial. *Blood* 116:2438-47.

DIETRICH S, HEGENBART U, ANDRULIS M, **SCHMITT T, BELLOS F,** MARTENS UM, **MEISSNER J, KRÄMER A, HO AD, DREGER P.** Blastic plasmacytoid dendritic cell neoplasia (BPDC) in elderly patients: Results of a treatment algorithm employing allogeneic stem cell transplantation with moderately reduced conditioning intensity. *Biol Blood Marrow Transplant* 2011 epub Jan 5.

DIETRICH S; TIELESCH B.; RIEGER M; NICKELSEN M; POTT C; **WITZENS-HARIG M;** KNEBA M; SCHMITZ,N.; **HO AD.; DREGER P.** Patterns and outcome of relapse after autologous stem cell transplantation for mantle cell lymphoma. *Cancer,* epub Nov 29, 2010

SCHMITT T; LUFT T; HEGENBART U; TRAN TH; **HO AD; DREGER P.** Pentostatin for Treatment of Steroid-Refractory Acute Graft-Versus-Host Disease: A Retrospective Single Center Analysis. *Bone Marrow Transplant* 2010; epub June 21:

WITZENS-HARIG M, DREGER P. Autologous transplantation of follicular lymphoma in the era of rituximab. *Leuk.Lymphoma* 2010;51:967-974.



AG GVHD

Mitglieder

- Thomas Luft
- Michael Hess
- Sascha Dietrich
- Sandra Sauer
- Viola Fieber
- Thomas Schmitt
- Ulrike Zech
- Mindaugas Andrulis
- Christine Falk

Projekte

- Steroid-refraktäre GVHD
- Endothel und GVHD
- CK18F-Studie



AG GVHD

Mitglieder

- Thomas Luft
- Michael Hess
- Sascha Dietrich
- Sandra Sauer
- Viola Fieber
- Thomas Schmitt
- Mindaugas Andrulis
- Christine Falk

Projekte

- Steroid-refraktäre GVHD
- Endothel und GVHD
- CK18F-Studie



CK18F: Prospective trial status

- Funded 50/50 by Helmholtz Alliance on Immunotherapy of Cancer and University of Heidelberg
- Data management and monitoring by KKS Heidelberg
- Sample size 100 patients within 12 months
- Start of accrual March 11, 2009
- 63 patients registered as of Feb 1, 2010



CK18F: Prospective trial status

- Funded 50/50 by Helmholtz Alliance on Immunotherapy of Cancer and University of Heidelberg
- Data management and monitoring by KKS Heidelberg
- Sample size 100 patients within 12 months
- Start of accrual March 11, 2009

• 144 patients registered as of Nov 30, 2010



Publikationen (Erst- oder Letztautorschaft):

BÖTTCHER S, RITGEN M, DREGER P. Allogeneic stem cell transplantation for chronic lymphocytic Leukemia: lessons to be learned from minimal residual disease studies. *Blood Rev* 2011;in press.

CONZELMANN M; WAGNER,A.H.; HILDEBRANDT,A.; RODIONOVA,E.; **HESS,M.;** ZOTA,A.; GIESE,T.; FALK,C.S.; **HO AD.; DREGER P;** HECKER M.; **LUFT T.** IFN-gamma activated JAK1 shifts CD40-induced cytokine profiles in human antigen-presenting cells toward high IL-12p70 and low IL-10 production. (2010). *Biochem.Pharmacol.* 80:2074-86.

DREGER P, DÖHNER H, RITGEN M, BÖTTCHER S, BUSCH R, DIETRICH S, BUNJES D, COHEN S, SCHUBERT J, HEGENBART U, BEELEN D, ZEIS M, STADLER M, HASENKAMP J, UHAREK L, SCHEID C, HUMPE A, ZENZ T, WINKLER D, HALLEK M, KNEBA M, SCHMITZ N, STILGENBAUER S. (2010). Allogeneic stem cell transplantation provides durable disease control in poor-risk chronic lymphocytic leukemia: long-term clinical and MRD results of the GCLLSG CLL3X trial. *Blood* 116:2438-47.

DIETRICH S, HEGENBART U, ANDRULIS M, SCHMITT T, BELLOS F, MARTENS UM, MEISSNER J, KRÄMER A, HO AD, DREGER P. Blastic plasmacytoid dendritic cell neoplasia (BPDC) in elderly patients: Results of a treatment algorithm employing allogeneic stem cell transplantation with moderately reduced conditioning intensity. *Biol Blood Marrow Transplant* 2011 epub Jan 5.

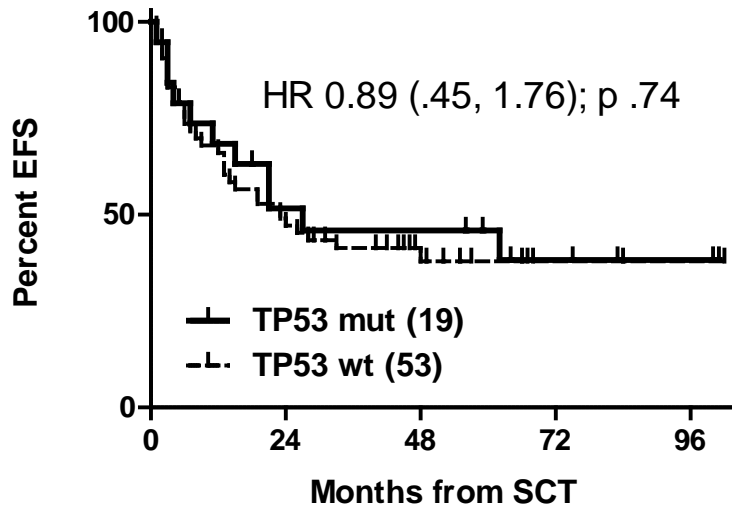
DIETRICH S; TIELESCH B.; RIEGER M; NICKELSEN M; POTT C; **WITZENS-HARIG M;** KNEBA M; SCHMITZ,N.; **HO AD.; DREGER P.** Patterns and outcome of relapse after autologous stem cell transplantation for mantle cell lymphoma. *Cancer*, epub Nov 29, 2010

SCHMITT T; LUFT T; HEGENBART U; TRAN TH; **HO AD; DREGER P.** Pentostatin for Treatment of Steroid-Refractory Acute Graft-Versus-Host Disease: A Retrospective Single Center Analysis. *Bone Marrow Transplant* 2010;epub June 21:

WITZENS-HARIG M, DREGER P. Autologous transplantation of follicular lymphoma in the era of rituximab. *Leuk.Lymphoma* 2010;51:967-974.

Allogeneic stem cell transplantation provides durable disease control in poor-risk chronic lymphocytic leukemia: long-term clinical and MRD results of the German CLL Study Group CLL3X trial

Peter Dreger,¹ Hartmut Döhner,² Matthias Ritgen,³ Sebastian Böttcher,³ Raymonde Busch,⁴ Sascha Dietrich,¹ Donald Bunjes,² Sandra Cohen,⁵ Jörg Schubert,⁶ Ute Hegenbart,¹ Dietrich Beelen,⁷ Matthias Zeis,⁸ Michael Stadler,⁹ Justin Hasenkamp,¹⁰ Lutz Uharek,¹¹ Christof Scheid,¹² Andreas Humpe,³ Thorsten Zenz,² Dirk Winkler,² Michael Hallek,¹² Michael Kneba,³ Norbert Schmitz,⁸ and Stephan Stilgenbauer,² for the German CLL Study Group



10:30 V665



Endauswertung einer randomisierten Studie zum Vergleich von autologer Transplantation vs. watch and wait bei 222 Patienten mit CLL in erster oder zweiter Remission (EBMT CLL auto trial/GCLLSG CLL3R trial)

F. McClanahan, M. Michallet, D. Milligan, L. Sutton, R. Brand, S. Richards, A. Van Biezen, M. Sobh, A. Gratwohl, W. Herr, C. Dearden, M. Hallek, S. Stilgenbauer, T. De Witte, D. Niederwieser, M. Leporrier, P. Dreger (Heidelberg, Mainz, Köln, Ulm, Leipzig, D; Lyon, Argenteuil, Caen, F; Birmingham, Oxford, Surrey, GB; Leiden, Nijmegen, NL; Basel, CH)



JAHRESTAGUNG 2010

Jahrestagung der Deutschen, Österreichischen und Schweizerischen Gesellschaften für Hamatologie und Onkologie



Berlin, 1.-5. Oktober 2010
www.haematologie-onkologie-2010.de



FCR vs autologous stem cell transplantation as first-line treatment for chronic lymphocytic leukemia: A comparison of two prospective studies of the GCLLSG

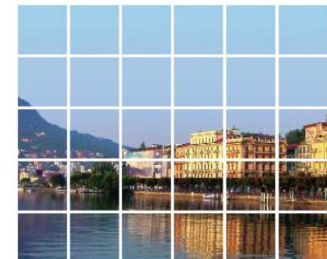
P Dreger, R Busch, S Stilgenbauer, AM Fink, T Zenz, U Jäger, **S Jung**, J Schetelig, M Hensel, W Knauf, M Kneba,

N Schmitz, H Döhner, M Hallek, for the German CLL Study Group



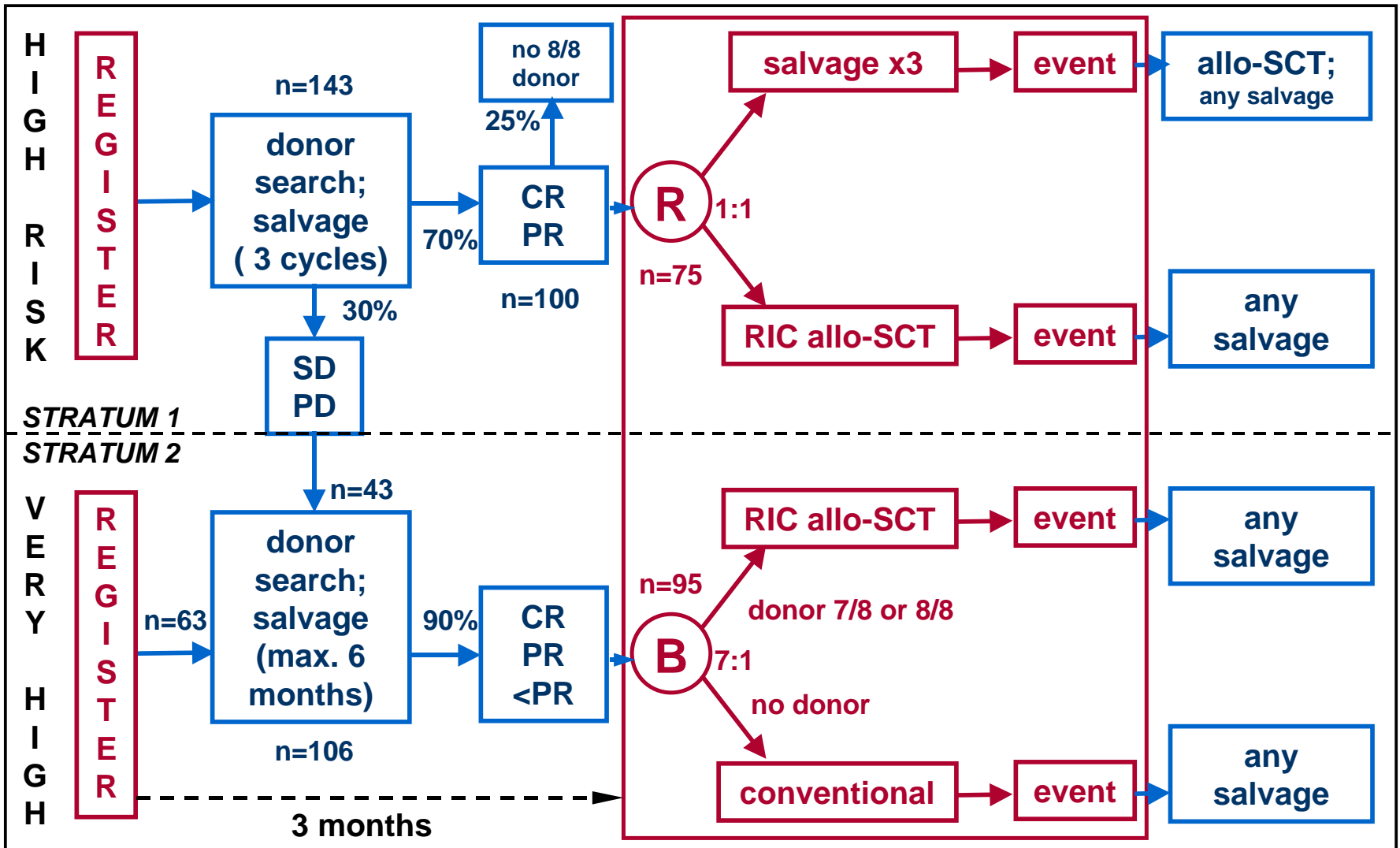
11-ICML

11th International Conference on Malignant Lymphoma



Second Announcement and Call for Abstracts

JUNE 15-18, 2011
PALAZZO DEI CONGRESSI
LUGANO, SWITZERLAND





CLL-
Studententreffen
23.-24.9.2011
in Heidelberg





Publikationen (Sonstige):

POTT C, HOSTER E, BÖTTCHER S, BELDJORD K, DELFAU M, MACINTYRE E, ASNAFI V, KLAPPER W, SIEBERT R, CALLET-BAUCHUT E, ANDERSEN N, VAN DONGEN JJM; BERGER F, **DREGER P**, UNTERHALT M, HIDDEMANN W, KLUIN-NELEMANS H, HERMINE O, KNEBA M, DREYLING M. (2010) Molecular remission is an independent predictor of clinical outcome in patients with mantle cell lymphoma after combined immunochemotherapy: a European MCL intergroup study. *Blood* 115:3215-22.

GARNIER A; ROBIN M; LAROSA,F.; GOLMARD,J.L.; LE,GOUILL S.; COITEUX,V.; TABRIZI,R.; BULABOIS,C.E.; CACHEUX,V.; KUENTZ,M.; DREYFUS,B.; **DREGER P**; RIO,B.; MOLES-MOREAU,M.P.; BILGER,K.; BAY,J.O.; LEBLOND,V.; BLAISE,D.; TOURNILHAC,O.; DHEDIN,N. Allogeneic hematopoietic stem cell transplantation allows long-term complete remission and curability in high-risk Waldenstrom's macroglobulinemia. Results of a retrospective analysis of the Societe Francaise de Greffe de Moelle et de Therapie Cellulaire. *Haematologica* 2010;95:950-955.

KRÖGER N; BACHER,U.; BADER,P.; BÖTTCHER,S.; BOROWITZ,M.J.; **DREGER P**; KHOURI,I.; MACAPINTAC,H.; OLAVARRIA,E.; RADICH,J.; STOCK,W.; VOSE,J.M.; WEISDORF,D.; WILLASCH,A.; GIRALT,S.; BISHOP,M.R.; WAYNE,A.S. NCI First International Workshop on the Biology, Prevention and Treatment of Relapse after Allogeneic Hematopoietic Stem Cell Transplantation: Report from the Committee on Disease-Specific Methods and Strategies for Monitoring Relapse Following Allogeneic Stem Cell Transplantation. Part I: Methods, Acute Leukemias and Myelodysplastic Syndromes. *Biol.Blood Marrow Transplant* 2010

KRÖGER N; BACHER,U.; BADER,P.; BÖTTCHER,S.; BOROWITZ,M.J.; **DREGER P**; KHOURI,I.; MACAPINTAC,H.; OLAVARRIA,E.; RADICH,J.; STOCK,W.; VOSE,J.M.; WEISDORF,D.; WILLASCH,A.; GIRALT,S.; BISHOP,M.R.; WAYNE,A.S. NCI First International Workshop on the Biology, Prevention and Treatment of Relapse after Allogeneic Hematopoietic Stem Cell Transplantation: Report from the Committee on Disease-Specific Methods and Strategies for Monitoring Relapse Following Allogeneic Stem Cell Transplantation. Part II: Chronic Leukemias, Myeloproliferative Neoplasms and Lymphoid Malignancies. *Biol.Blood Marrow Transplant* 2010;16:1325-1346.

MICHALLET M; **DREGER P**; SUTTON,L.; BRAND,R.; RICHARDS,S.; VAN BIEZEN,A.; SOBH,M.; GRATWOHL,A.; HERR,W.; DEARDEN,C.; HALLEK,M.; DE WITTE,T.; NIEDERWIESER,D.; LEPORRIER,M.; MILLIGAN D. . Final results of a randomized trial comparing autotransplant versus wait and watch in 222 patients with CLL in 1st or 2nd remission *Blood*, epub November 24, 2010;

WISKEMANN J, **DREGER P**, SCHWERDTFEGER R, **BONDONG A**, HUBER G, KLEINDIENST N, ULRICH CM, BOHUS M. Effects of a partly self-administered exercise program prior to, during and after allogeneic stem cell transplantation: a randomized controlled trial. *Blood* 2010 epub Dec 29. .

**NCI First International Workshop on the Biology,
Prevention, and Treatment of Relapse after Allogeneic
Hematopoietic Stem Cell Transplantation: Report from
the Committee on Disease-Specific Methods and
Strategies for Monitoring Relapse Following Allogeneic
Stem Cell Transplantation. Part II: Chronic Leukemias,
Myeloproliferative Neoplasms, and Lymphoid
Malignancies**

*Nicolaus Kröger,¹ Ulrike Bacher,¹ Peter Bader,² Sebastian Böttcher,³
Michael J. Borowitz,⁴ Peter Dreger,⁵ Issa Khouri,⁶ Eduardo Olavarria,⁷ Jerald Radich,⁸
Wendy Stock,⁹ Julie M. Vose,¹⁰ Daniel Weisdorf,¹¹ Andre Willasch,² Sergio Giral,⁶
Michael R. Bishop,¹² Alan S. Wayne¹³*



“Allo” sind

„von Dusch“

ML Knee

R Gruß

R Adam

...und das Team!

Station

C Harter

S Gaul

M Schiller

C Brandt

F Kosely

H Linhart

F McClanahan

S Rohlfing

S Sauer

A Martin

T Luft

Koordination

P Stadtherr

I Opitz

A Herrmann

Psychologie

D Tönnessen

Ambulanz

F Bellos

T Luft

S Schönland

M Rieger

S Jung

A Radujkovic

P Wuchter

M Kaden

A Pirch

Case Manager

A Bondong

L Keilbach

Labor

T Luft

M Conzelmann

M Hess

R Schulz

S Dietrich

HLA

H Tran

K Nerbel

G Opelz

& Team

Finanzen & MDK

M Geiss

M Thalheimer

Sozialdienst

A Bergner

G Daiß

Studienzentrale

AM Geueke

J Klemmer

& Team

Anleitung

U Hegenbart

P Dreger

Early Bird Team

G Egerer

AD Ho

...alle Mitarbeiter der MedV !