



---

UniversitätsKlinikum Heidelberg

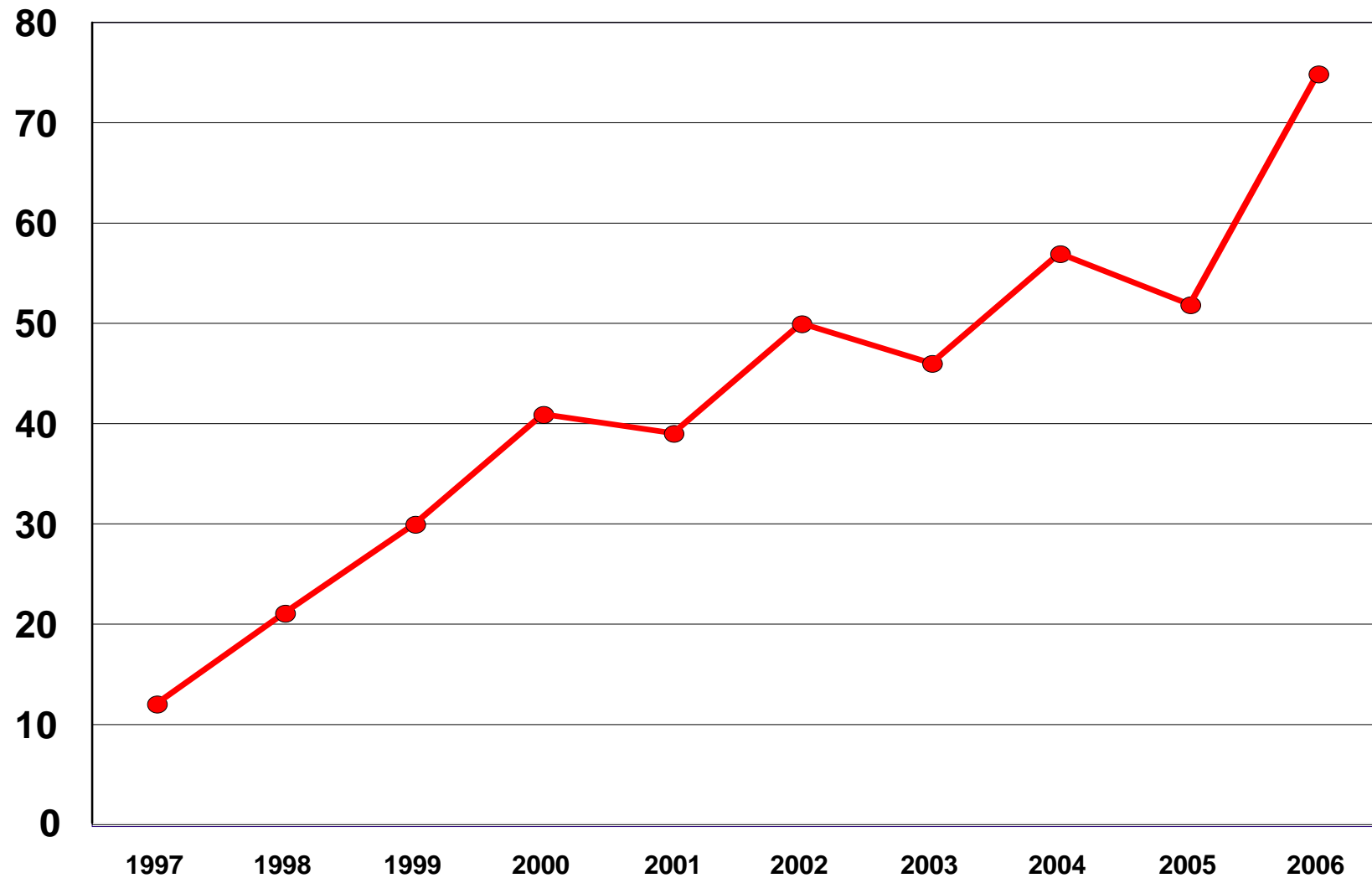
# **Allogene Stammzelltransplantation: Jahresbericht 2006**

**Sektion Allogene Stammzelltransplantation  
Abteilung Innere Medizin V  
Universitätsklinikum Heidelberg**

29.1.2007



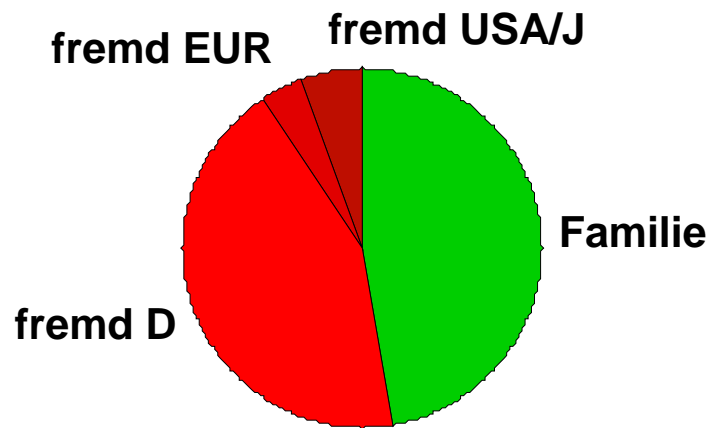
# Anzahl allogene Transplantationen



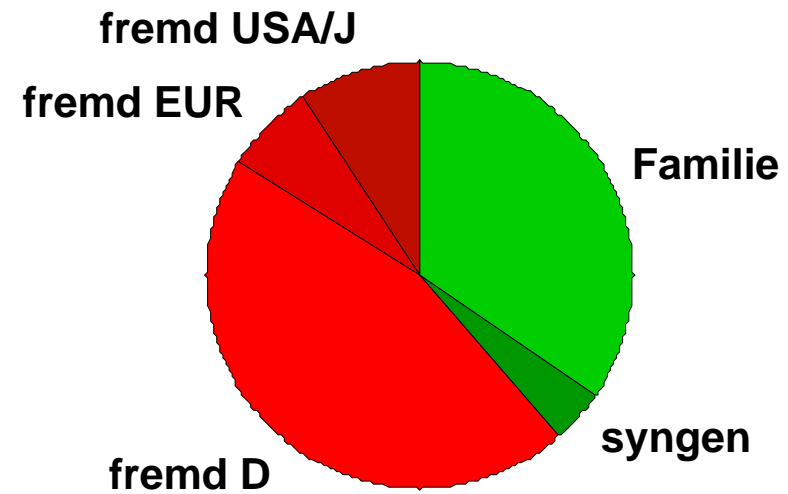


# Spender

2005



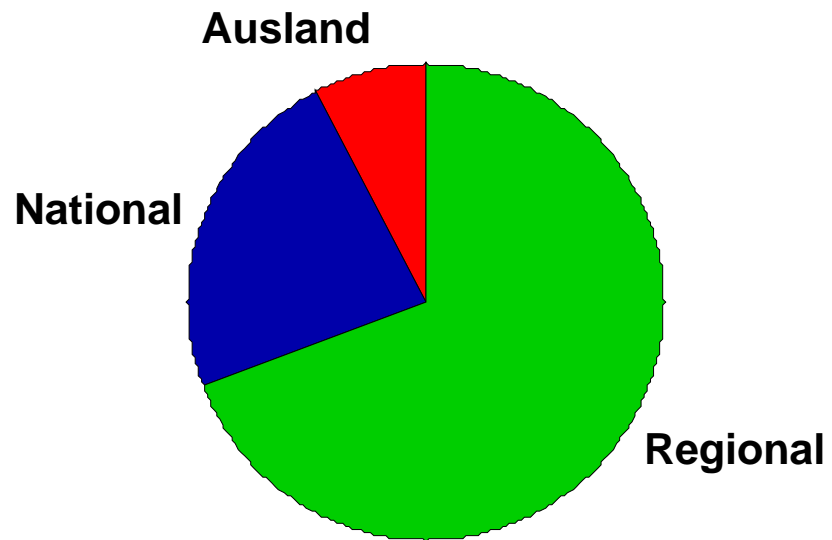
2006



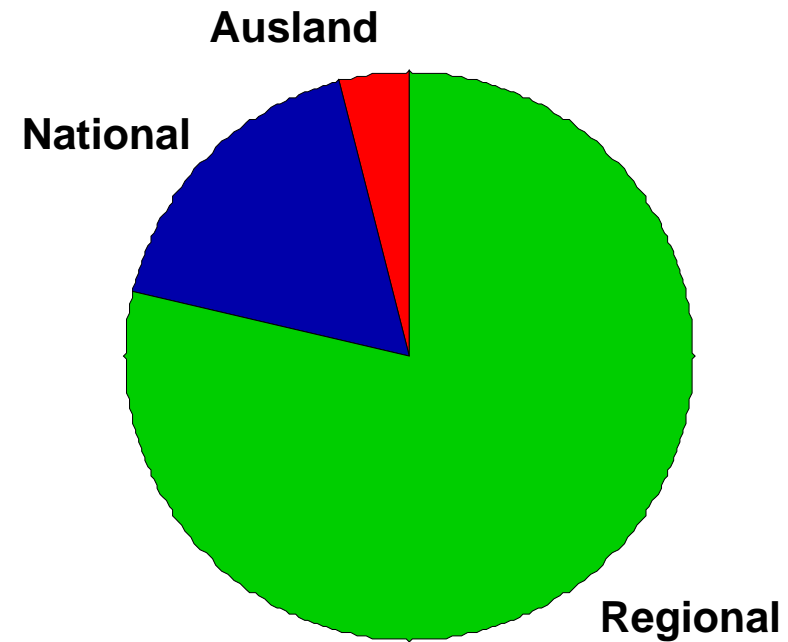


# Patienten

2005



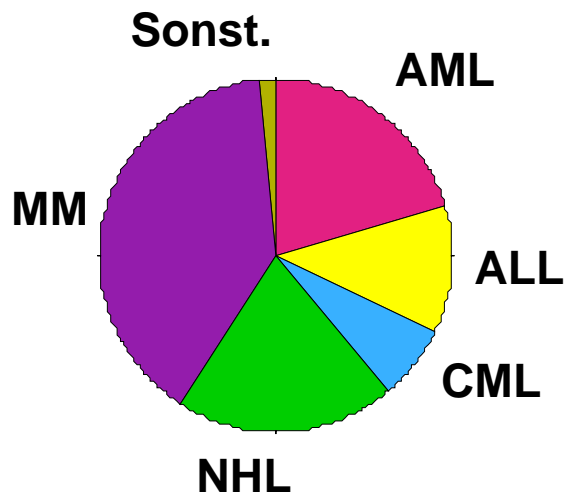
2006



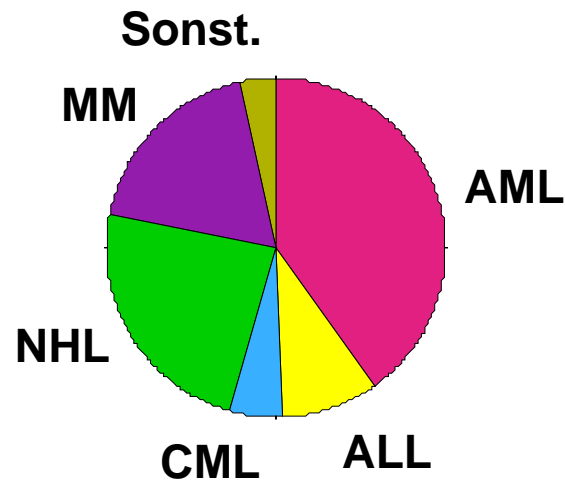


# Diagnosen

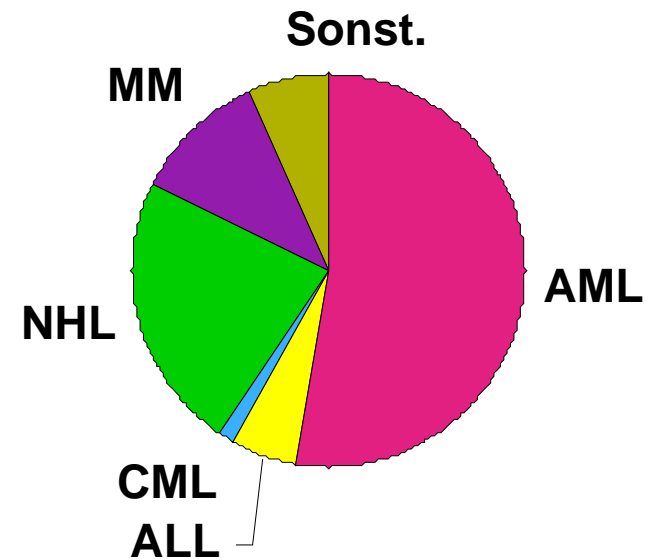
2004



2005



2006



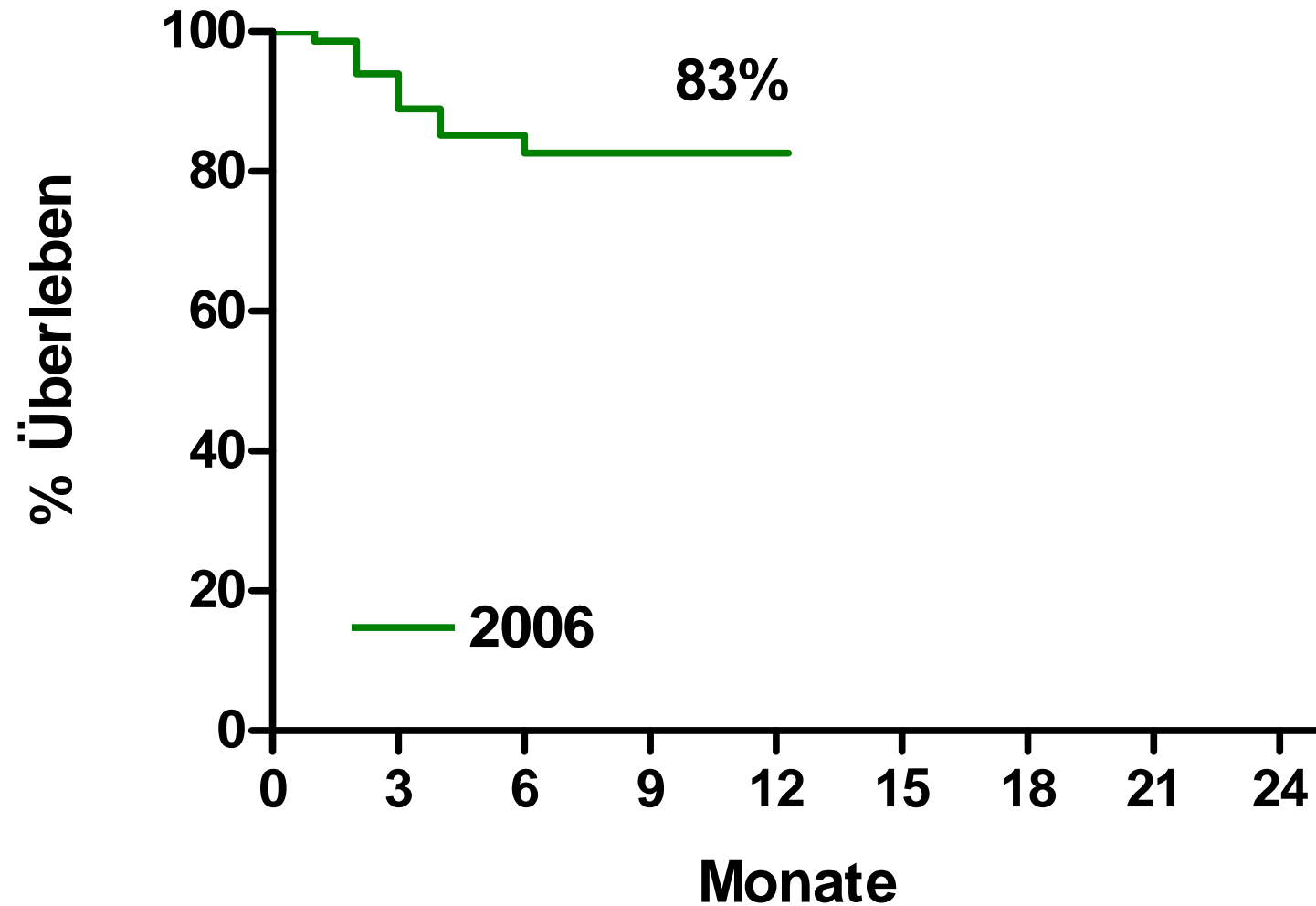


## Diagnosen im Einzelnen (in Studien)

|          |         |               |                |
|----------|---------|---------------|----------------|
| AML CR1  | 17 (10) | Aggressive B  | 8 (5)          |
| AML >CR1 | 17      | PTCL          | 5 (1)          |
| MDS      | 5 (2)   | CLL           | 5 (5)          |
| ALL CR1  | 3 (3)   | Myelom        | 7 (3)          |
| ALL ref  | 1       | AL-Amyloid.   | 1              |
| OMF      | 2 (1)   | SAA           | 2              |
| CML BC   | 1 (1)   | Sarkom        | 1              |
|          |         | <b>Gesamt</b> | <b>75 (31)</b> |

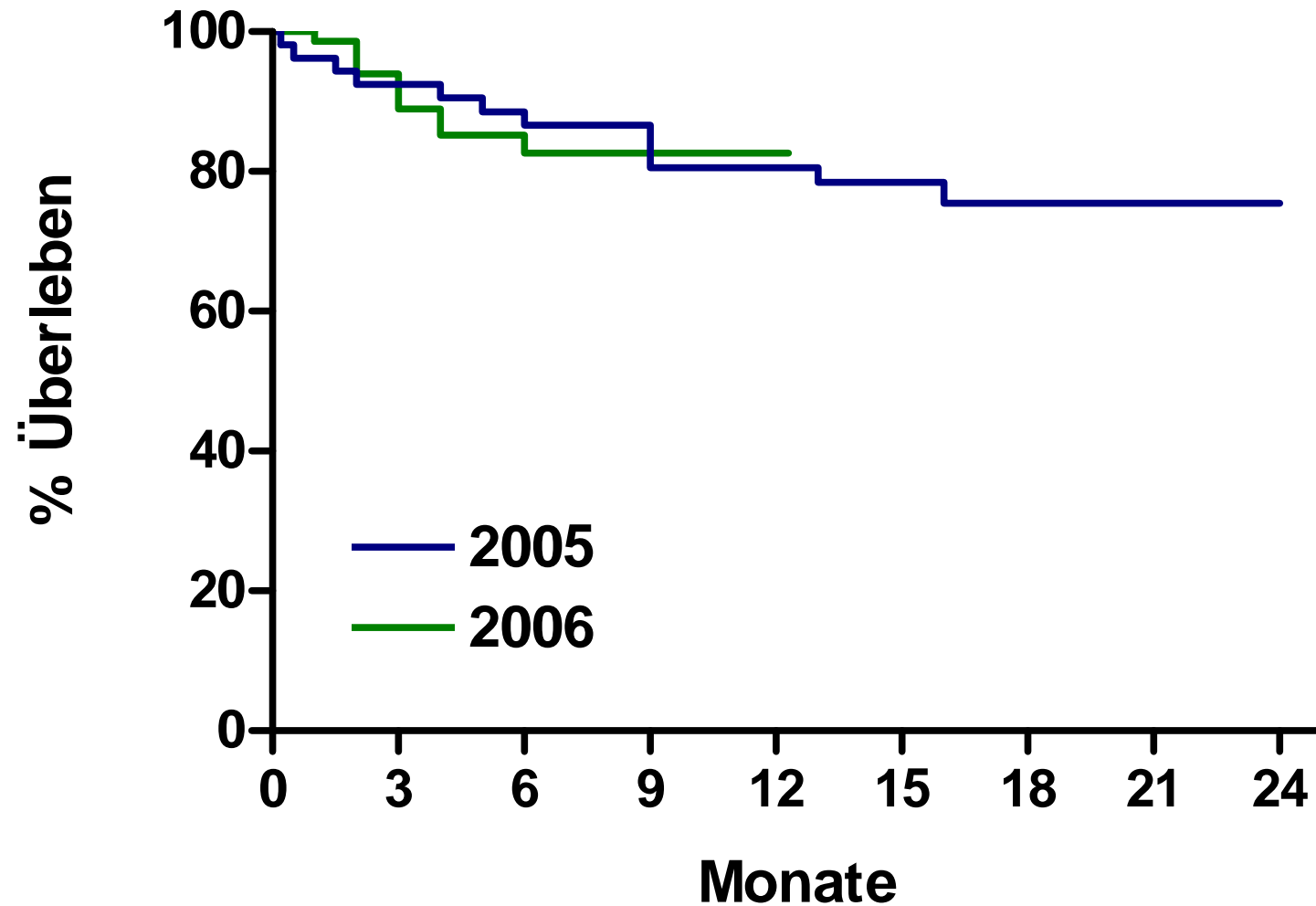


# Gesamtüberleben (alle)





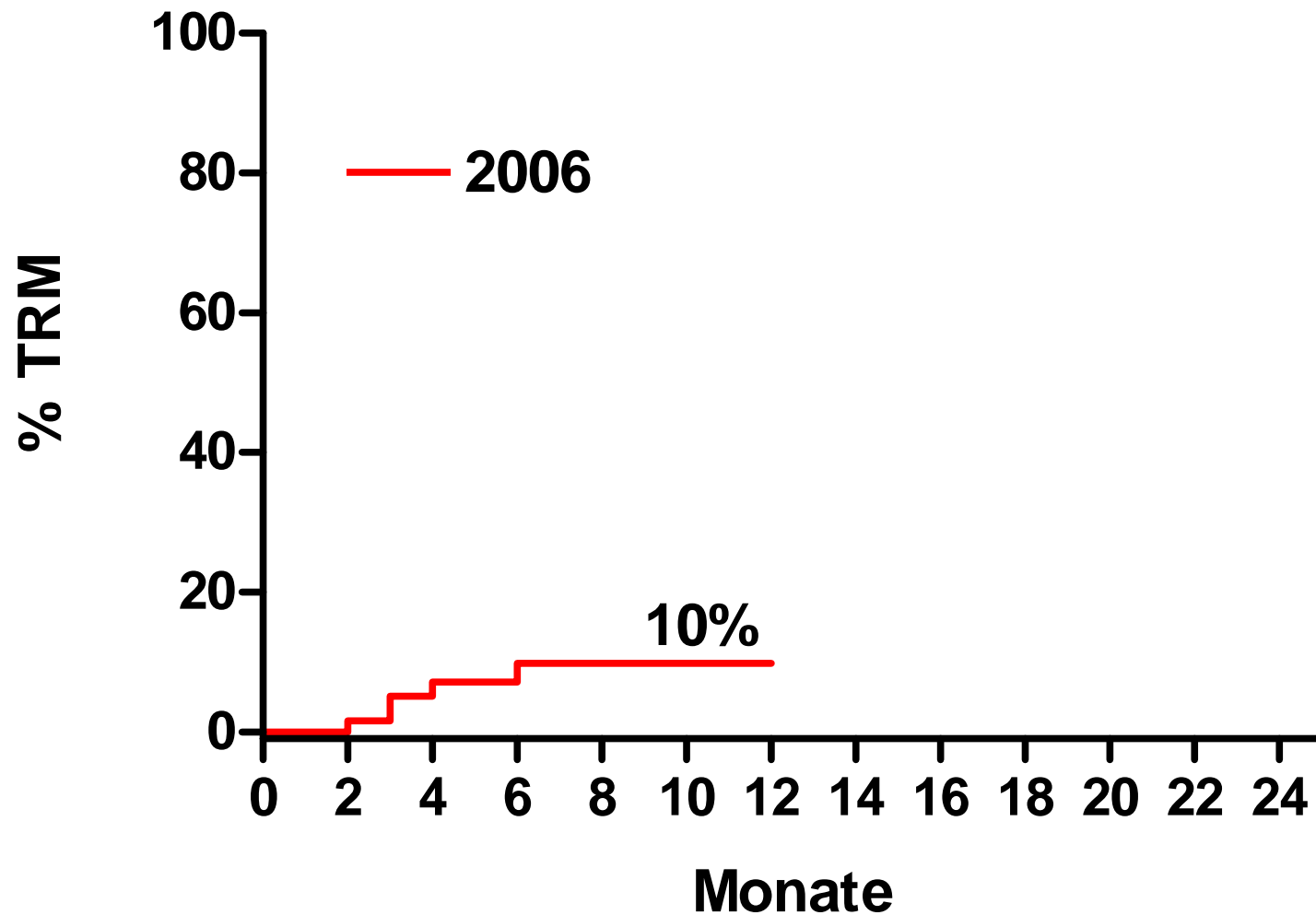
# Gesamtüberleben (alle)





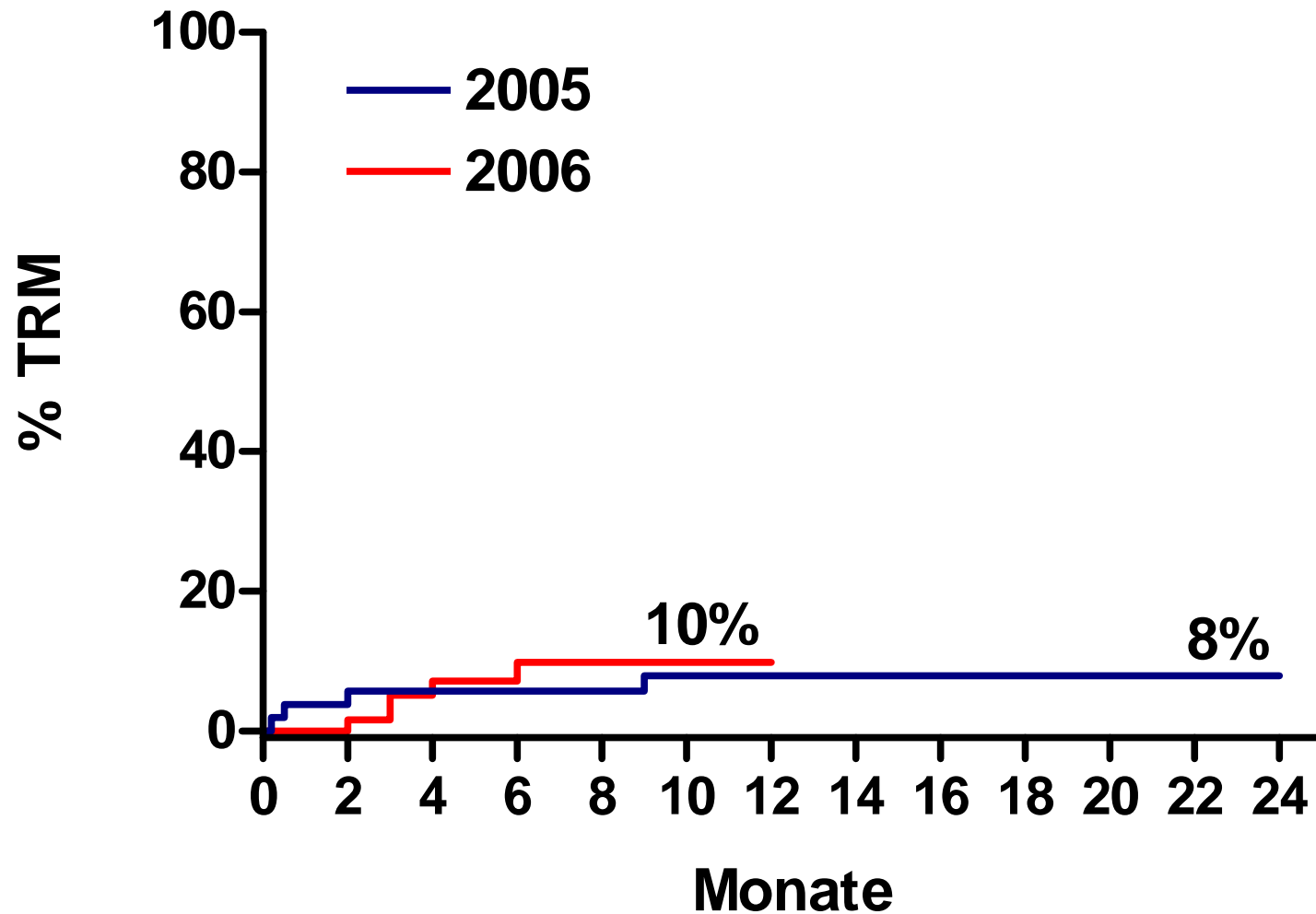


# Therapie-assoziierte Mortalität (alle)





# Therapie-assoziierte Mortalität (alle)



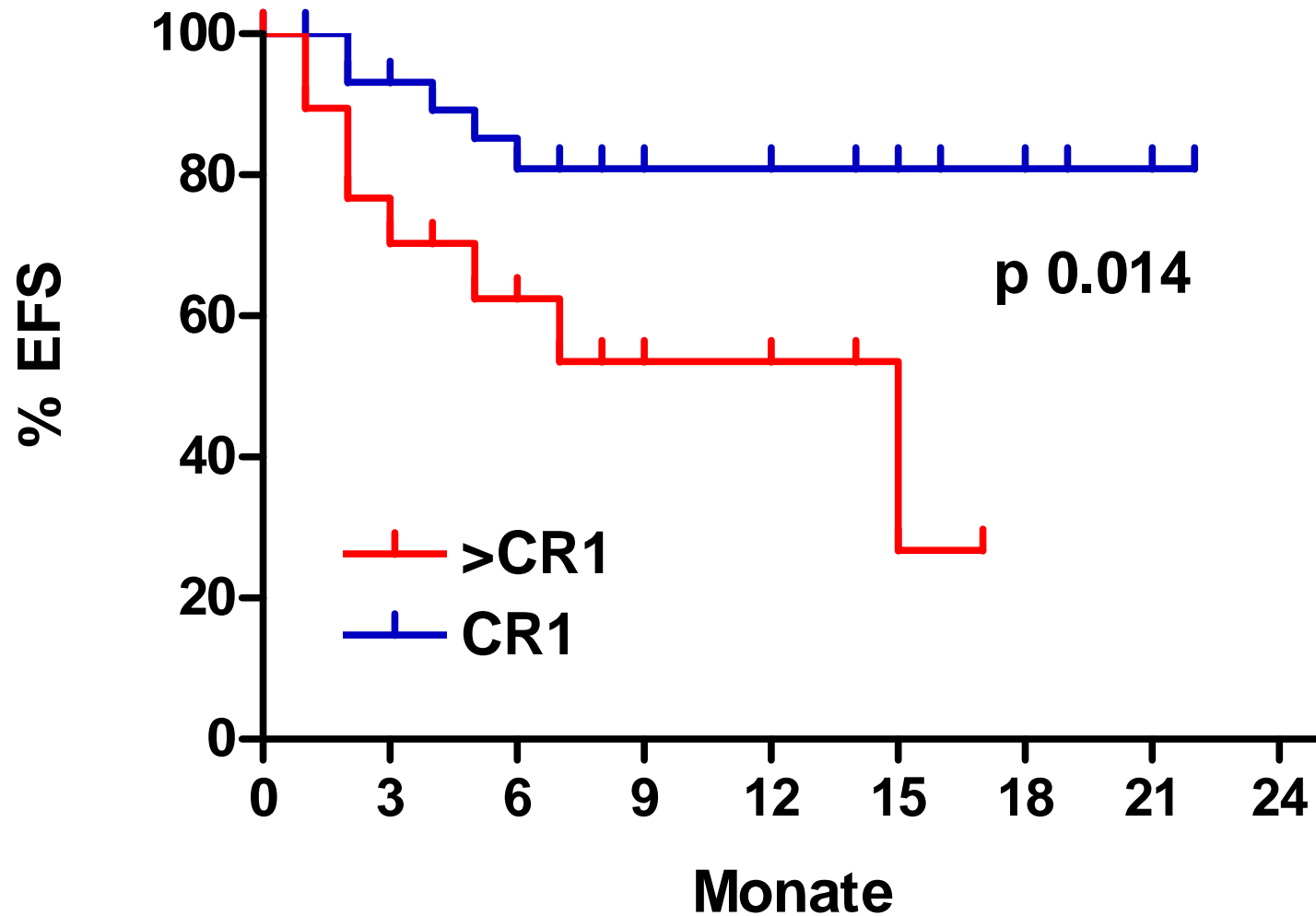


## Diagnosen im Einzelnen (in Studien)

|          |         |               |                |
|----------|---------|---------------|----------------|
| AML CR1  | 17 (10) | Aggressive B  | 8 (5)          |
| AML >CR1 | 17      | PTCL          | 5 (1)          |
| MDS      | 5 (2)   | CLL           | 5 (5)          |
| ALL CR1  | 3 (3)   | Myelom        | 7 (3)          |
| ALL ref  | 1       | AL-Amyloid.   | 1              |
| OMF      | 2 (1)   | SAA           | 2              |
| CML BC   | 1 (1)   | Sarkom        | 1              |
|          |         | <b>Gesamt</b> | <b>75 (31)</b> |

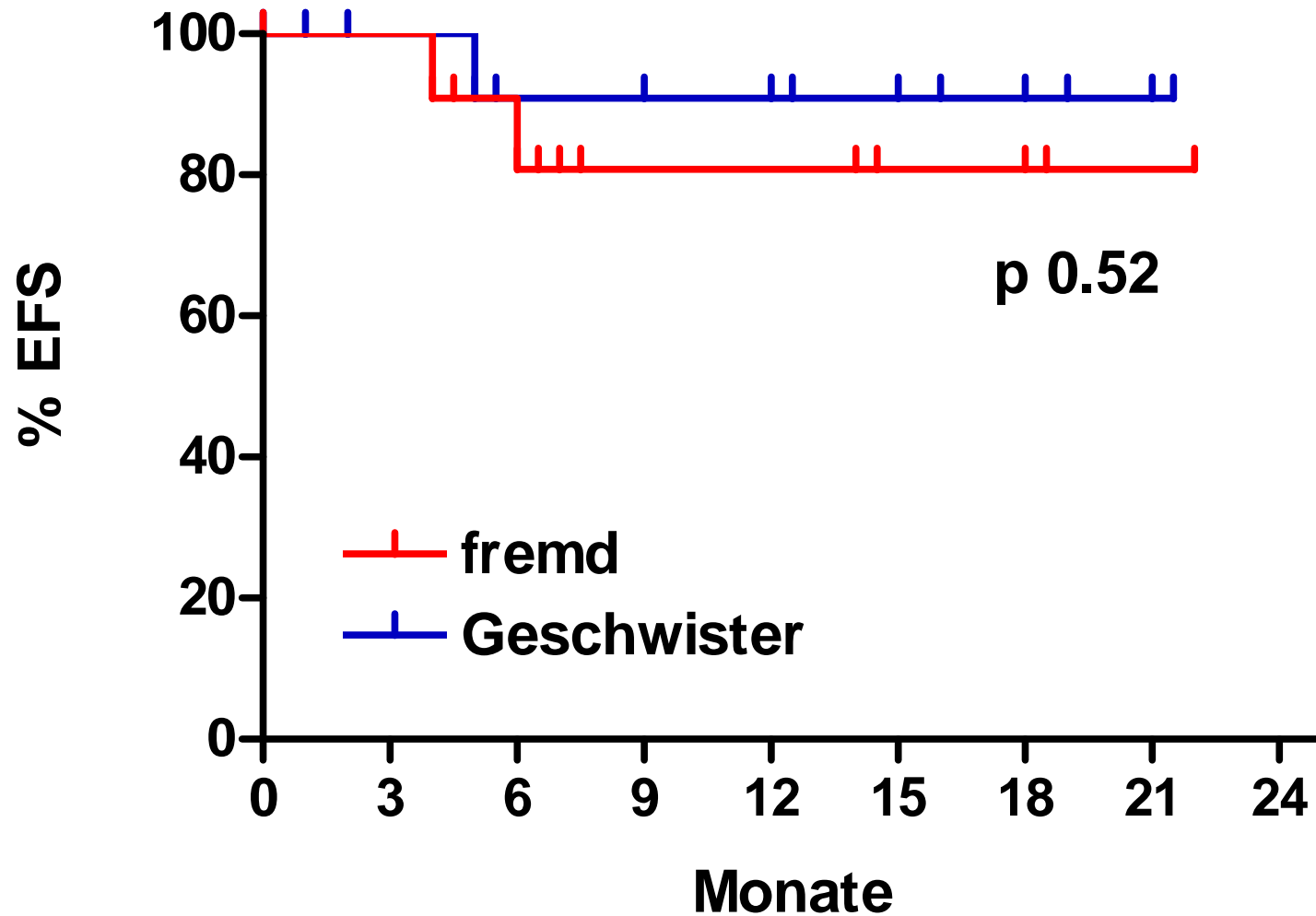


# AML: EFS nach Status (n=51)





# AML CR1: EFS nach Spender (n=25)



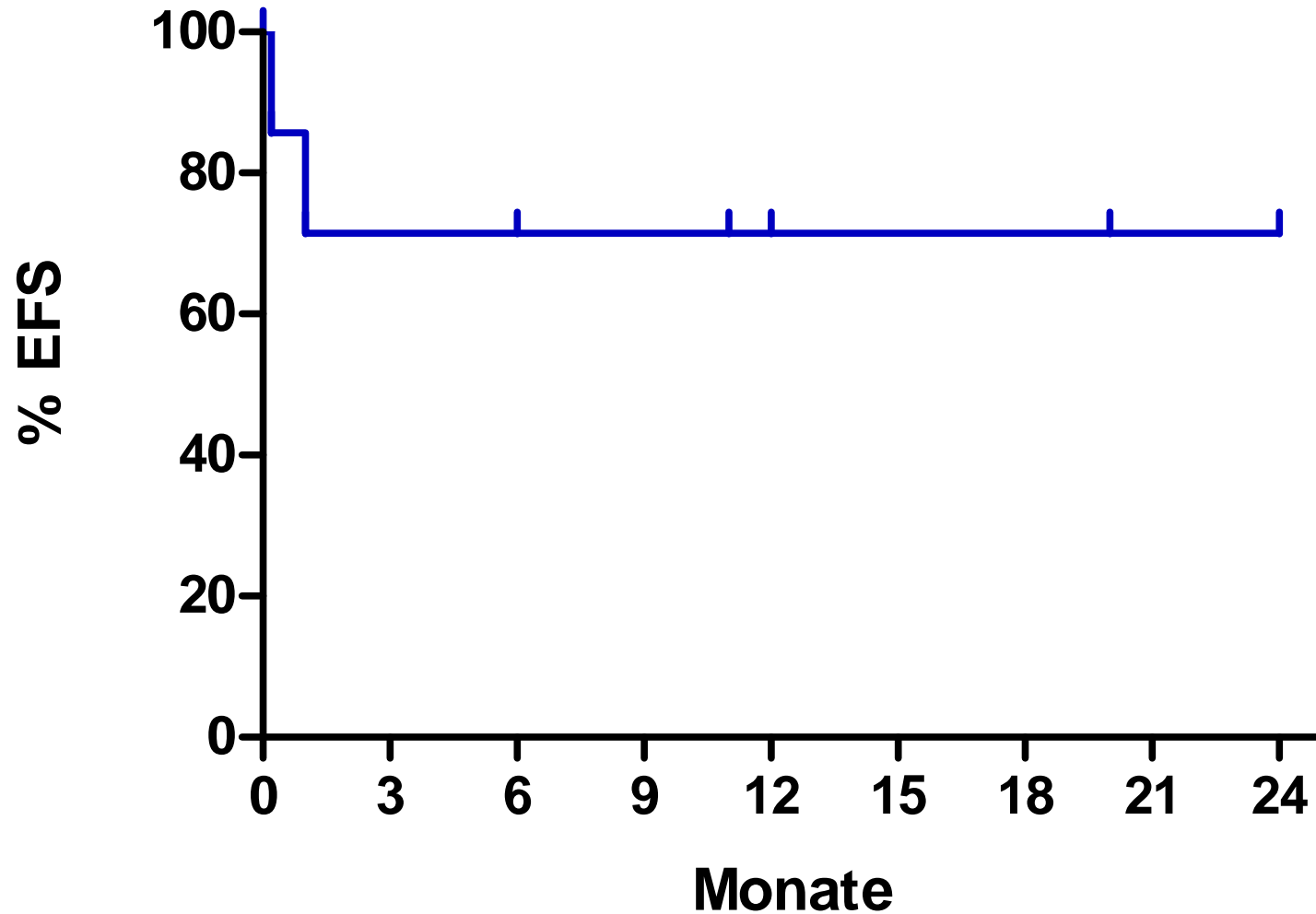


## Diagnosen im Einzelnen (in Studien)

|          |         |               |                |
|----------|---------|---------------|----------------|
| AML CR1  | 17 (10) | Aggressive B  | 8 (5)          |
| AML >CR1 | 17      | PTCL          | 5 (1)          |
| MDS      | 5 (2)   | CLL           | 5 (5)          |
| ALL CR1  | 3 (3)   | Myelom        | 7 (3)          |
| ALL ref  | 1       | AL-Amyloid.   | 1              |
| OMF      | 2 (1)   | SAA           | 2              |
| CML BC   | 1 (1)   | Sarkom        | 1              |
|          |         | <b>Gesamt</b> | <b>75 (31)</b> |



# Refraktäre T-Zell-Lymphome: EFS (n=7)





## Allo-SCT: Forschung

|                         |                              |
|-------------------------|------------------------------|
| Adaptive Immunologie:   | T Luft, M Conzelmann         |
| CD40L und JAK2:         | M Conzelmann, T Luft         |
| GVHD-Monitoring:        | T Luft, P Dreger             |
| Engraftment-Syndrom:    | M Rieger, T Luft             |
| Allo-Studie Amyloidose: | S Schönland, U Hegenbart     |
| Allo-Studien Myelom:    | S Schönland, U Hegenbart     |
| Allo-Studie CLL:        | P Dreger, M Hensel           |
| CLL retrospektiv        | P Dreger, A Krämer, M Hensel |
| FL: allo-Indikationen   | P Dreger, M Hensel           |
| MCL auto                | M Rieger, M Hensel, P Dreger |
| AML: Aplasie-TPL        | J Dengler, P Dreger          |





# Allo-SCT: Publikationen 2006

Dreger P, Corradini P, Kimby E, et al (2007) Indications for allogeneic stem cell transplantation in chronic lymphocytic leukemia: the EBMT transplant consensus. **Leukemia**, 21., 12-17.

Dreger P, Rieger M, Seyfarth B, Hensel M, Kneba M, Ho AD, Schmitz N, & Pott C (2007) Rituximab-augmented myeloablation for first-line autologous stem cell transplantation for mantle cell lymphoma: Effects on molecular response and clinical outcome. **Haematologica**, 92, 42-49.

van de Donk NW, Kroger N, Hegenbart U, et al. (2006) Prognostic factors for donor lymphocyte infusions following non-myeloablative allogeneic stem cell transplantation in multiple myeloma. **Bone Marrow Transplant**, 37, 1135-1141.

van de Donk NW, Kroger N, Hegenbart U, et al. (2006) Remarkable activity of novel agents bortezomib and thalidomide in patients not responding to donor lymphocyte infusions following nonmyeloablative allogeneic stem cell transplantation in multiple myeloma. **Blood**, 107, 3415-3416.

Hegenbart U, Niederwieser D, Sandmaier BM, et al. (2006) Treatment for acute myelogenous leukemia by low-dose, total-body, irradiation-based conditioning and hematopoietic cell transplantation from related and unrelated donors. **JCO**; 24:444-453.

Luft T, Rodionova E, Maraskovsky E, et al. (2006) Adaptive functional differentiation of dendritic cells - integrating the network of extra- and intracellular players. **Blood** :in press.

Pott, C., Schrader, C., Gesk, S., Harder, L., Tiemann, M., Raff, T., Bruggemann, M., Ritgen, M., Gahn, B., Unterhalt, M., Dreyling, M., Hiddemann, W., Siebert R, Dreger P, Kneba M. (2006) Quantitative assessment of molecular remission following high-dose therapy with autologous stem cell transplantation predicts long term remission in mantle cell lymphoma. **Blood** 107, 2271-2278.

Rodionova E, Conzelmann M, Maraskovsky E, Hess M, Kirsch M, Giese T, Ho AD, Zöller M, Dreger P, Luft T. (2006) GSK-3 mediates differentiation and activation of pro-inflammatory dendritic cells. **Blood** Oct.10; epub

Schetelig J, Dreger P. (2006) Chronische lymphatische Leukämie: Neue Perspektiven durch allogene Stammzelltransplantation für Hochrisiko-Patienten? **Deutsches Ärzteblatt** 103, A1372-A1377.

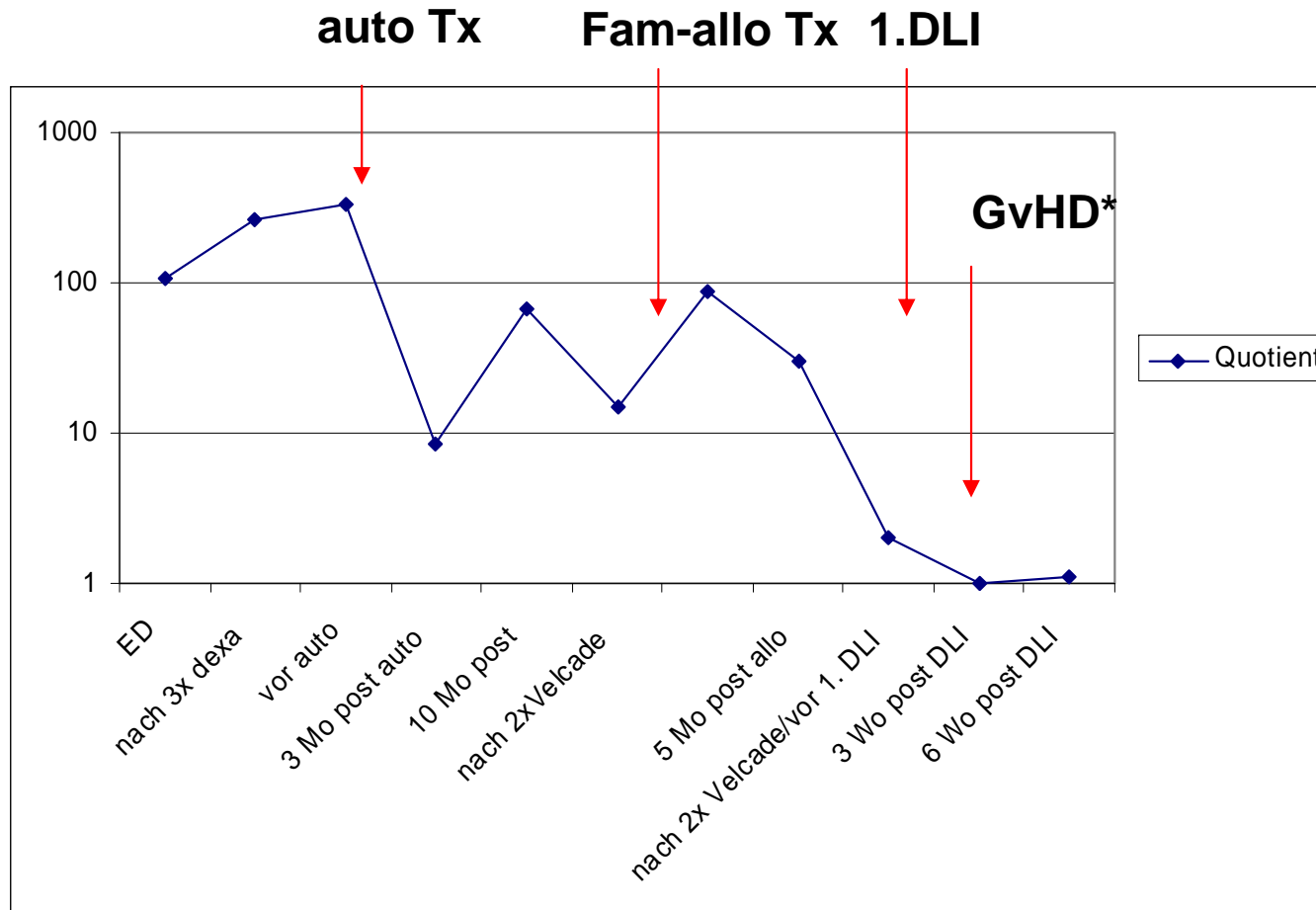
Schönland SO, Lokhorst H, Buzyn A, et al. (2006) Allogeneic and syngeneic hematopoietic cell transplantation in patients with amyloid light chain amyloidosis: a report from the EBMT. **Blood** 107:2578-84

Schönland SO (2006) Fortschritte in der Diagnostik und Therapie der Amyloidosen. **Deutsches Ärzteblatt** 103: 2237-44.

Siegel S, Wagner, A., Friedrichs B, Kabelitz, D, Steinmann J, Coggin, J., Rohrer, J., Dreger P, Schmitz N, Zeis M. (2006) Identification of HLA-A\*0201-Presented T Cell Epitopes Derived from the Oncofetal Antigen-Immature Laminin Receptor Protein in Patients with Hematological Malignancies. **J Immunol**, 176, 6935-6944.



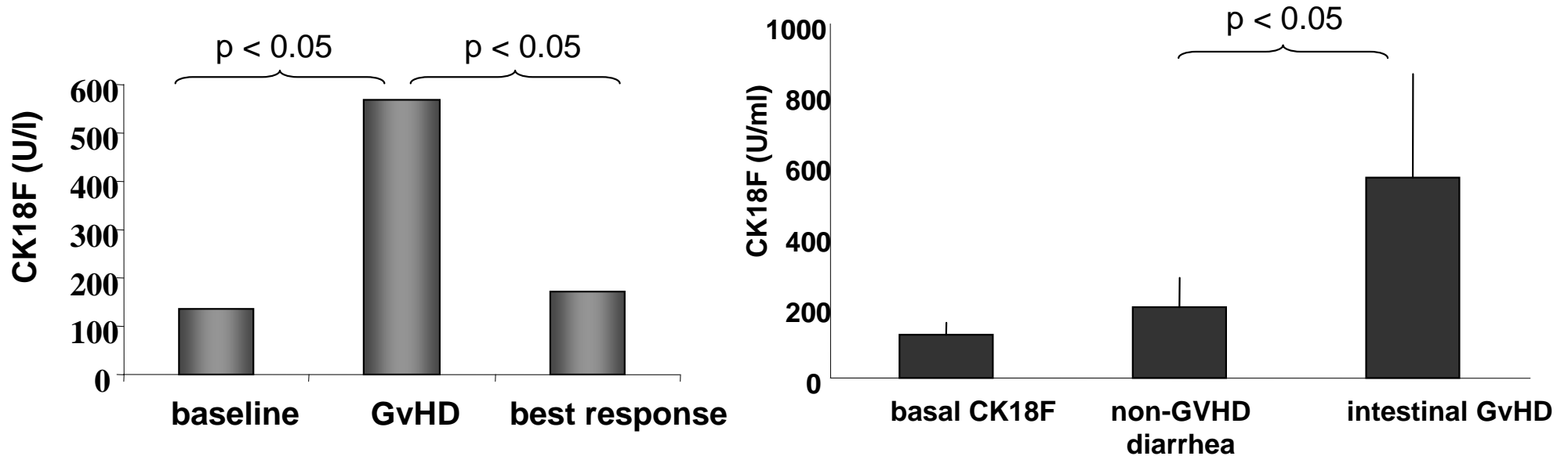
# DLI-Effekt bei AL-Amyloidose



\* IFE neg in Serum und Urin (2x)



## CK18 fragments correlate with hepato-intestinal GVHD activity and are not increased in moderate infectious enteritis





## **IQWiG:**

**Keine Evidenz für fremd-allogene SCT bei AML/ALL!**



**DIE ZEIT**

**online**

www.zeit.de  
11. August 2006

HOCHSCHULE UND WISSENSCHAFT

# Stammzell-Transplantation als Heilungschance für Patienten mit akuter Leukämie erhalten !

Zur Verfügung  
gestellt vom  
Informationsdienst  
Wissenschaft



Experten der Medizinischen Universitätsklinik Heidelberg kritisieren Vorbericht des IQWiG / 2005 war in Heidelberg die Fremdspendertransplantation bei neun von elf Patienten mit akuter myeloischer Leukämie erfolgreich



# Allo-SCT sind

## „von Dusch“

ML Knee

R Gruß

R Adam

...und das Team!

## Koordination

P Stadtherr

I Opitz

V Fieber

## Case Manager

A Bondong

## Psychologie

D Tönnessen

## Sozialdienst

A Bergner

G Daiß

## Station

F Bellos

W Gilles

C Harter

B Maurer

F Reu

A Ring

C Schweizer

M Zoz

A Martin

## Ambulanz

J Dengler

M Rieger

S Schönland

I Schulz

D Prochaska

## Labor

T Luft

M Conzelmann

M Moos

## Anleitung

U Hegenbart

P Dreger

## Aufsicht

G Egerer

AD Ho

...alle Mitarbeiter der MedV